



STRATUS Workstation Technical Guide

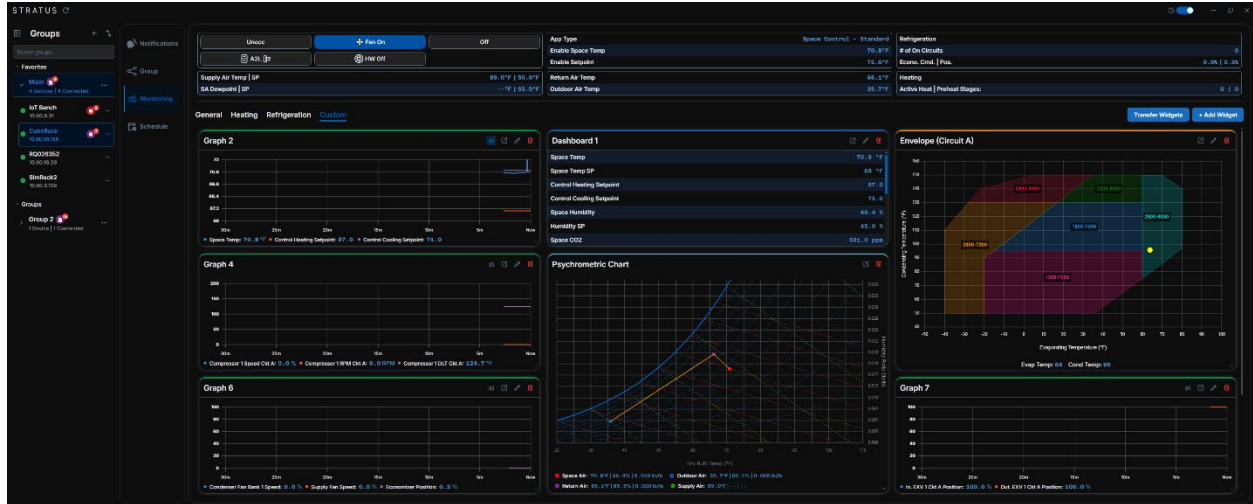


TABLE OF CONTENTS

1. INTRODUCTION.....	1
2. STARTUP	2
2.1. Downloading and Installing Software.....	2
2.2. Opening Sequence.....	2
2.3. Creating a Group	2
2.4. Adding a Device and Group Toolbar	4
2.5. Importing Groups/Devices Startup Workflow	5
2.6. Device Interactions and Toolbar	6
2.7. Task Panel	7
3. ALERTS AND NOTIFICATIONS	8
4. GROUP MONITORING	14
5. MONITORING	15
5.1. Features	16
5.2. Top Bar	20
5.3. General	21
5.4. Heating	22
5.5. Refrigeration.....	23
5.6. Custom Monitoring.....	24
6. SCHEDULE.....	28
6.1. Weekly Schedule	29
6.2. Quick Schedule	32
6.3. Holidays.....	33
6.4. Transfer Schedule	35
6.5. Time Adjustment	36
7. REVISION LOG.....	38

TABLE OF FIGURES

Figure 1: Overview of STRATUS Workstation Layout.....	1
Figure 2: Splash Screen with a Loading Circle	2
Figure 3: Creating Groups and Collapsing Columns	2
Figure 4: Add Group Widget Pop-out.....	3
Figure 5: Groups in Favorites vs Standard Groups	3
Figure 6: Groups Dropdown	4
Figure 7: Overview of Group Dropdown Options	4
Figure 8: Add Device Information Screen	4
Figure 9: Import/Export Groups Icon.....	5
Figure 10: Import/Export Groups and Device Pop-up.....	5
Figure 11: Select Groups and Devices to Export.....	5
Figure 12: Group/Device Import.....	5
Figure 13: Interactions of Groups and Devices	6
Figure 14: Alerts Icons	6
Figure 15: Version Number, App ID, and User Role Tooltip	6
Figure 16: Device Dropdown	6
Figure 17: Select the Edit Button	7
Figure 18: Edit Device Screen	7
Figure 19: Moving Groups.....	7
Figure 20: Task Panel	7
Figure 21: Overview of Alerts Screen	8
Figure 22: Expanding an Alert Rows	9
Figure 23: Device Notifications.....	10
Figure 24: Selecting an Alarm for More Details.....	11
Figure 25: Alarms Screen Filtered Down to One Device	12
Figure 26: An Acknowledgement Required Notification.....	13
Figure 27: Acknowledgement Required Information.....	13
Figure 28: Group Monitoring Tab and Page with Two Widgets	14
Figure 29: Overview of Main Monitoring Screen.....	15
Figure 30: General Title/Table Hover Tooltip.....	16
Figure 31: Hover Tooltip for Trend Log Graphs.....	17
Figure 32: Hover Tooltip for A2L.....	18
Figure 33: Locked Out Icon and Tooltip	18
Figure 34: Widget Pop-out Icon.....	19
Figure 35: Widget Pop-out Window	19

Figure 36: Example of How to Adjust the Widgets.....	19
Figure 37: Top Bars.....	20
Figure 38: General Monitoring Layouts.....	21
Figure 39: Heating Monitoring Page.....	22
Figure 40: Cooling Monitoring.....	23
Figure 41: Empty Custom Monitoring Page.....	24
Figure 42: Add Widget Button.....	25
Figure 43: Widget Types.....	25
Figure 44: Circuit A.....	25
Figure 45: Selecting A Circuit.....	25
Figure 46: Delete Icon for All Widgets.....	25
Figure 47: Edit Icon to Select Data Points.....	26
Figure 48: Overview of Selectable Data Points.....	26
Figure 49: Example of Selected Data Points.....	26
Figure 50: Display of Selected Data Points.....	26
Figure 51: Selecting a Graph.....	27
Figure 52: Overview of Selectable Graph Data Points.....	27
Figure 53: Transfer Widgets Button.....	27
Figure 54: Transfer Widgets Module.....	27
Figure 55: Schedule Layout.....	28
Figure 56: Weekly Schedule Layout.....	29
Figure 57: Methods of Editing the Schedule for Occupied or Unoccupied.....	30
Figure 58: Edit Default Schedules.....	30
Figure 59: Edit Modifiable Schedules.....	31
Figure 60: Quick Schedule Module.....	32
Figure 61: Holiday Overview.....	33
Figure 62: Holiday Expanded Tabs.....	33
Figure 63: Edit Holiday Date Selection.....	33
Figure 64: Holiday Quick Schedule Module.....	34
Figure 65: Transfer Schedule Icon.....	35
Figure 66: Transfer Schedule Module.....	35
Figure 67: RTU Time Adjustment Overview.....	36
Figure 68: RTU Time Adjustment Drop-down.....	36
Figure 69: RTU Time Zone Dropdown.....	37
Figure 70: RTU Date Dropdown.....	37

1. INTRODUCTION

STRATUS Workstation is a desktop application built to provide access to all AAON STRATUS Units within the user's building network. STRATUS Workstation comes with the ability to monitor multiple units at once via access to key performance indicators such as notifications and sensor readings with both predefined and custom dashboards. Users may also create and distribute a schedule to multiple units with a design crafted to provide an intuitive and clean user experience.

To access STRATUS Workstation, users will need to create an account on the Unit Manager and ensure that the Unit Manager is connected to the network. To create an account, an admin of the unit manager will need to create the account for the user, or, if no user has been created, the startup admin will be prompted to create an account within the Unit Manager. To establish network connectivity, users need to have an Ethernet cable plugged in, and their building's network admin must allow it to be on the network.



Figure 1: Overview of STRATUS Workstation Layout

2. STARTUP

2.1. Downloading and Installing Software

1. Open a browser and navigate to www.aaon.com/controls to download STRATUS Workstation.
2. Open the file and run the program.
 - a) A wizard will pop up and allow users to choose where the application will be installed on their computer.

2.2. Opening Sequence

Upon launching the application, a splash screen will appear.

NOTE: Loading the splash screen is contingent on the application connecting to devices currently connected to it.

Once the loop is completed or the devices are connected, the splash screen will disappear, and the main application will display. During the initial setup of STRATUS Workstation, or when no devices are currently connected, the splash screen will disappear automatically after three to five seconds.



Figure 2: Splash Screen with a Loading Circle

An empty landing screen will open upon starting the app, allowing users to begin adding groups and devices. Users can switch between light and dark mode using the toggle in the upper-right corner of Figure 1, page 1.

2.2.1. Refreshing Workstation & Version Location

Press the refresh icon in the top left corner of Figure 1, page 1, to refresh the device connectivity. Hovering over the STRATUS logo will generate a tooltip.

2.3. Creating a Group

Under the Groups tab, at the top left of the screen, there is a “+” icon that, when pressed, renders a pop-up to create a group, shown in Figure 3. The user can create a custom name for the group. For example, users could place troubled units into a group or group the units by location. Users may also add a group to their favorites by selecting the “Add to Favorites” checkbox, which sends the created group to the favorites tab (shown in Figure 4). Users will type in their desired Group name and submit it by pressing the “Create” button, in Figure 4, page 3. Users can collapse the group column on the main page by clicking the collapse icon in the top-left corner of the column to free up more space, as shown in Figure 3.

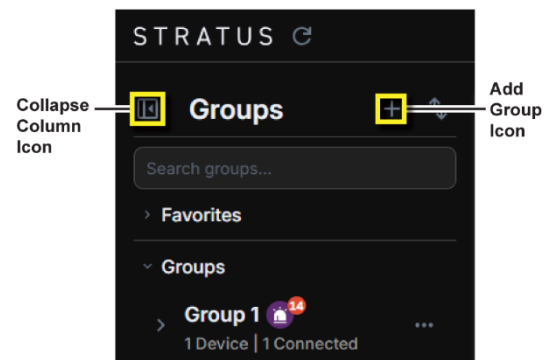


Figure 3: Creating Groups and Collapsing Columns

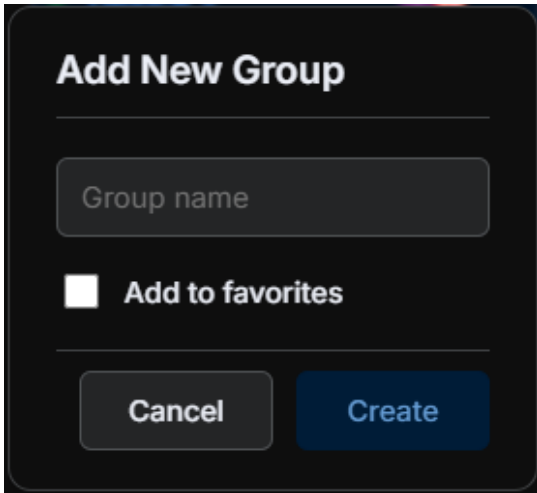


Figure 4: Add Group Widget Pop-out

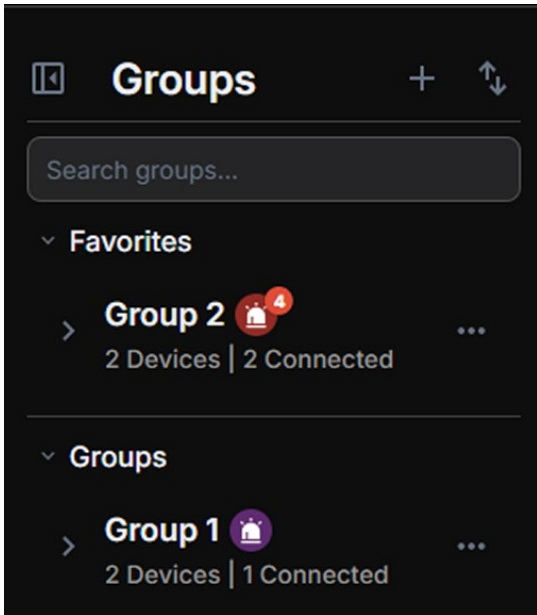


Figure 5: Groups in Favorites vs Standard Groups

2.4. Adding a Device and Group Toolbar

Users will press the triple-dot icon for each group to perform the following actions:

1. Add a device
2. Add or remove a device from favorites
3. Edit a Group Name
4. Delete a Group (and the devices associated with it)

To add a device, users must press the **“Add Device”** toolbar option shown in Figure 7, and input the following information captured in Figure 8:

1. The IP Address of the unit.
2. The Username and Password for the account associated with the Unit Manager.

Press **“Add”** to submit and finalize the information, and check that the device has been successfully added to STRATUS Workstation.

Error messages will be generated for an invalid IP Address, Username, or Password.

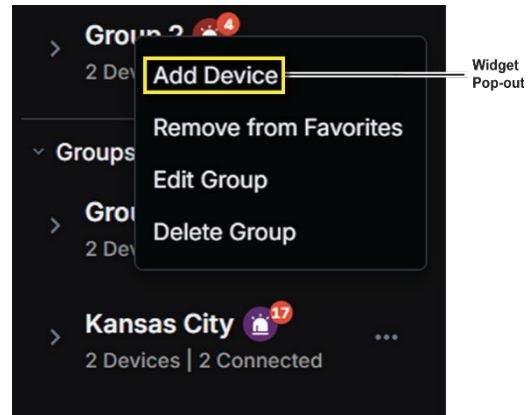


Figure 7: Overview of Group Dropdown Options

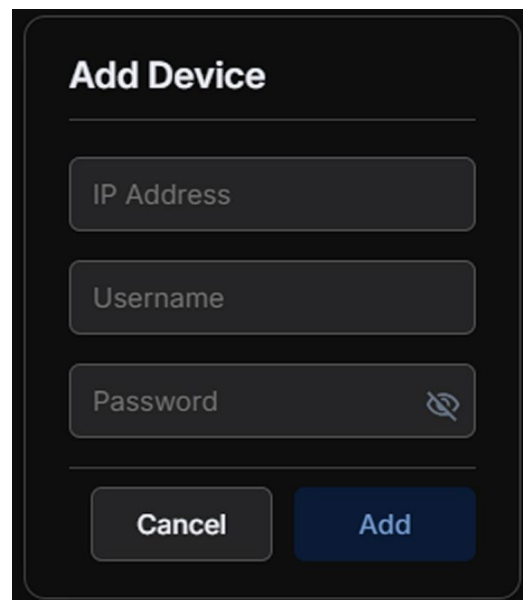


Figure 8: Add Device Information Screen

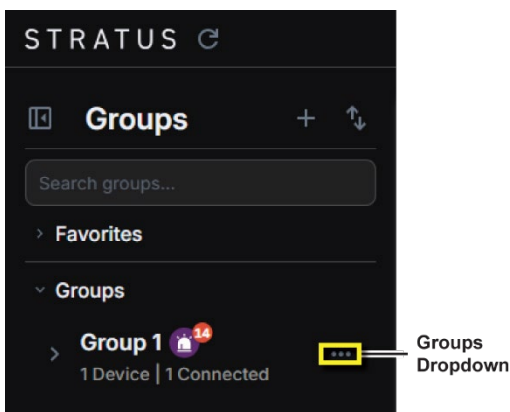


Figure 6: Groups Dropdown

2.5. Importing Groups/Devices Startup Workflow

When downloading STRATUS Workstation on a new device and wanting to add the same device(s) as another user, select the up/down arrow icon to export the device(s) from one STRATUS Workstation and import them to another. This process is broken down in Figures 9, 10, 11, and 12.

When exporting devices, users can granularly select the groups and devices to export (as shown in Figure 11) for greater flexibility, allowing new users to only access the selected device(s) or group(s). Once the user exports their selections, the file explorer will open, and they will be prompted to save the file (JSON) to share for use.

When importing devices, new users will press **“Choose File”** before selecting the JSON file they received from another user via email. Users will then press **“Import”** to import the file into STRATUS Workstation, as shown in Figure 12.

NOTE: Users are required to enter their username and password for each device to ensure security.

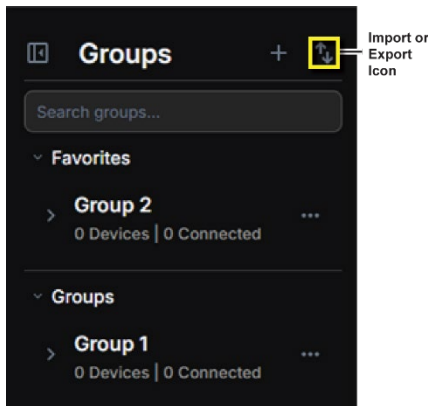


Figure 9: Import/Export Groups Icon

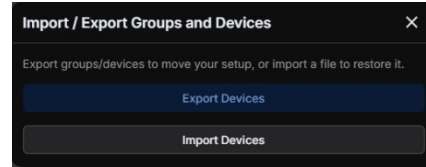


Figure 10: Import/Export Groups and Device Pop-up

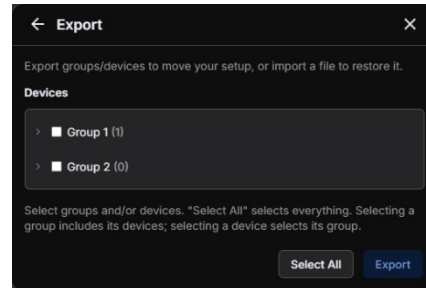


Figure 11: Select Groups and Devices to Export

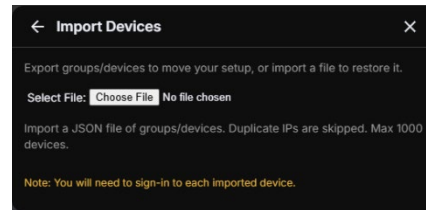


Figure 12: Group/Device Import

2.6. Device Interactions and Toolbar

The Groups column is collapsible or expandable. The notification sum for each device, as a tag, shows up in the group, as well as the same icon with a tag count for each device's display.

See Figure 13.

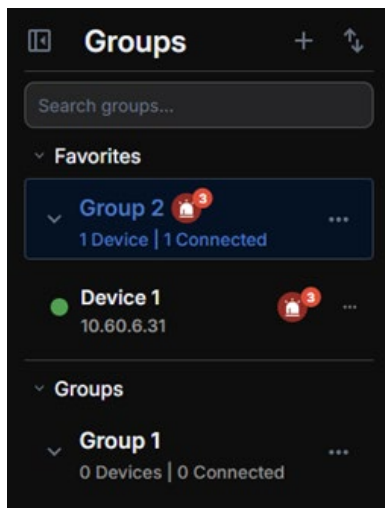


Figure 13: Interactions of Groups and Devices

There are three notification icons: Warning (Yellow), Alarm (Red), and Fault (Purple). This is also the order of severity from lowest to highest. The highest available notification will be the color that is shown on the icon.

See Figure 14.

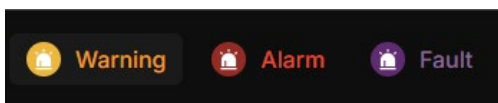


Figure 14: Alerts Icons

When a user hovers over a device, the Version, App ID, and the role of the user is in will display in a tooltip.

See Figure 15.

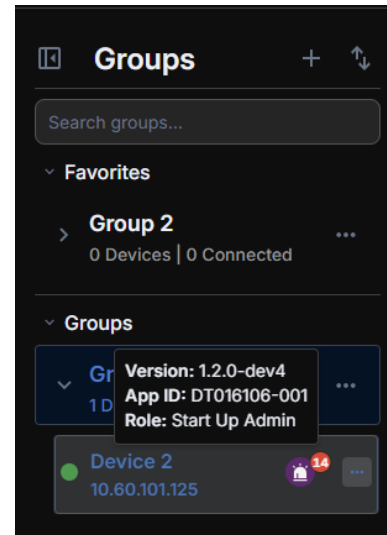


Figure 15: Version Number, App ID, and User Role Tooltip

Users may also edit or delete devices by pressing the triple-dot icon on the device object. The device name can be edited in the Unit Manager, as STRATUS Workstation uses it as the reference for how the device name should be displayed. However, only users with the role of admin or higher can edit the device name. If the role of the user is below an admin, they cannot edit the name.

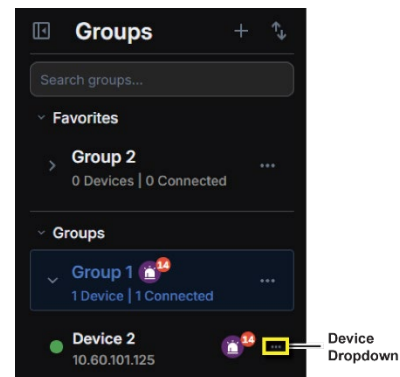


Figure 16: Device Dropdown

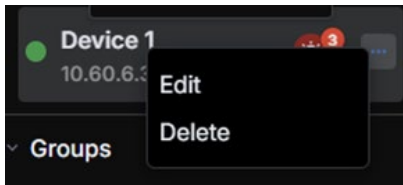


Figure 17: Select the Edit Button

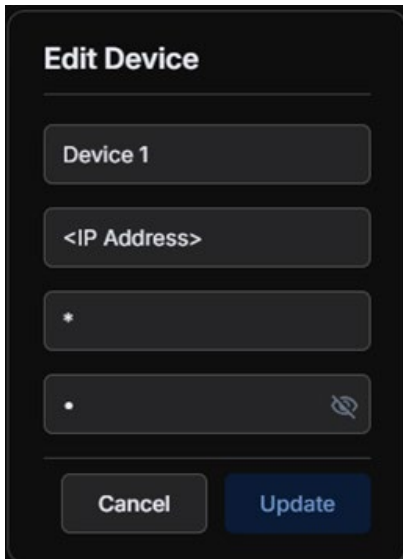


Figure 18: Edit Device Screen

Users may also move devices between groups using the drag-and-drop method. For example, when clicking and holding a device, a small bar with the device name will appear, which they will use to drag to another group.

See Figure 19 for details.

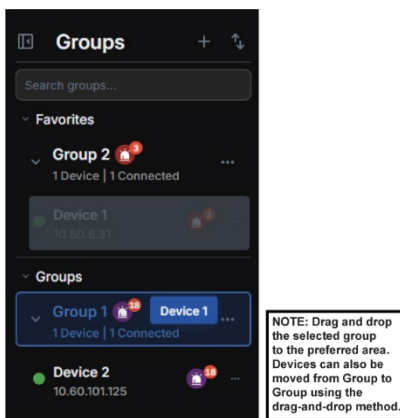


Figure 19: Moving Groups

2.7. Task Panel

The task panel consists of four categories:

- Notifications
- Group
- Monitoring
- Schedule

See Figure 20 to view the icons within the panel.

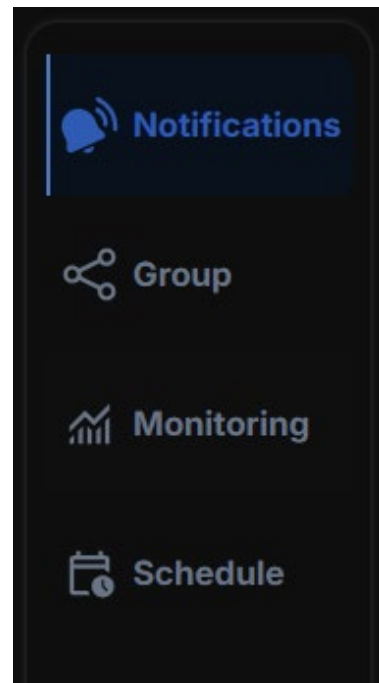


Figure 20: Task Panel

3.ALERTS AND NOTIFICATIONS

To view notifications for a specific group or device, select the desired group or device in the Groups column. This opens the notifications screen shown in Figure 21. The Alerts section is always visible in the task panel in the middle column.

If a user opens the Alerts tab without selecting a group or device, the system displays all alerts for every group in the workstation in an expandable, collapsible list (Figure 21).

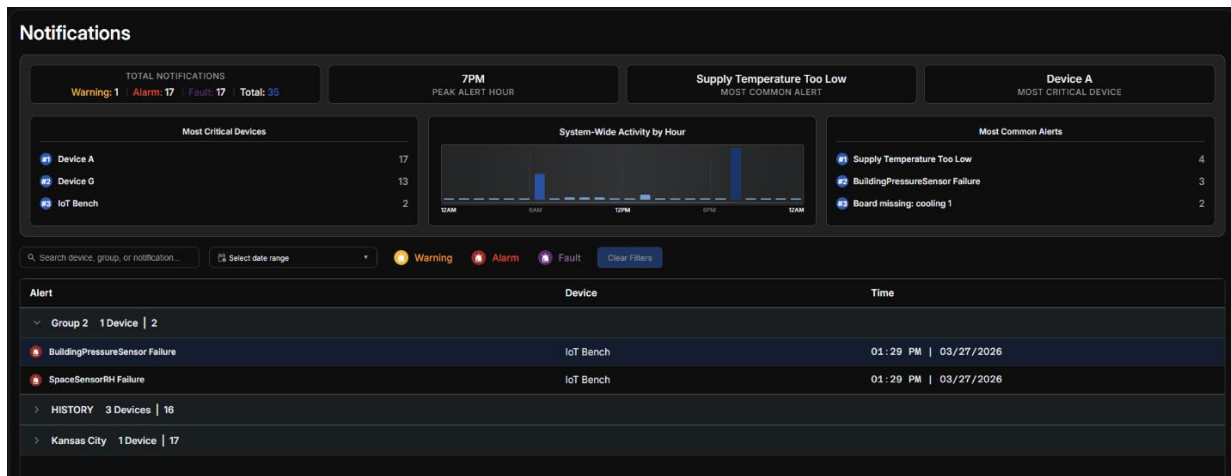


Figure 21: Overview of Alerts Screen

All groups and devices that have alerts are shown in Figure 22. Additionally, there is a dashboard that gives a high-level overview of the user's workstation notification status. These widgets include total alerts, peak hour, most common alert, most critical device (day for a single device), most critical devices (day for a single device), a heat map of the most common hour of notification occurrence, and most common alerts (top 5).

Users may filter the alerts by pressing the following items on the legend:

- Searching for a specific group, device, or notification
- Selecting a date range via a month-day-year calendar style interface
- Searching by alarm type

See Figure 22 for details.

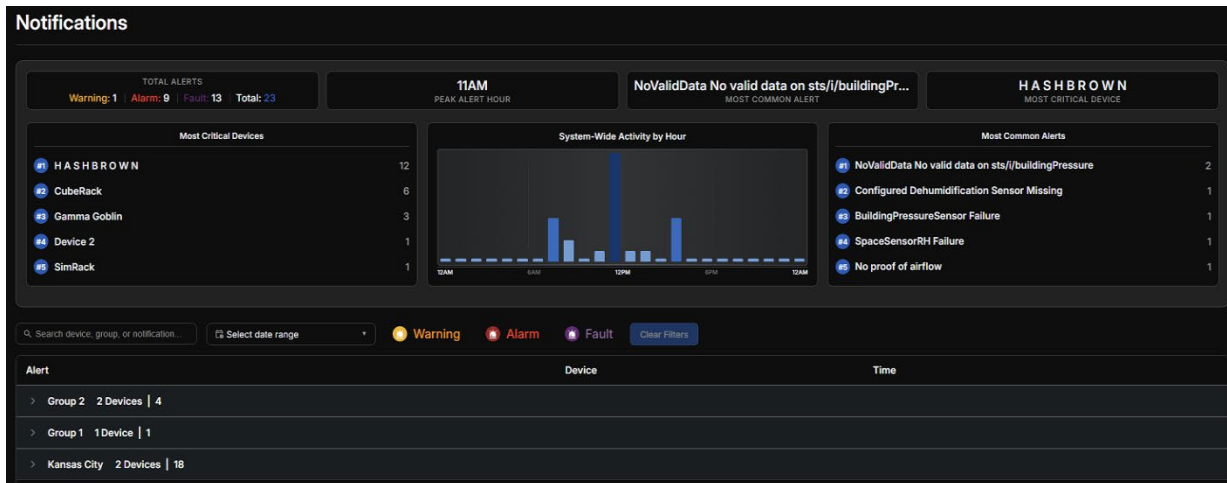


Figure 22: Expanding an Alert Rows

If a user has no alerts selected, the page will display all device notifications. However, if a group is selected, only the alerts pertaining to the group will display; conversely, if a device is selected, only the alerts pertaining to that device will display.

See Figure 23 below.

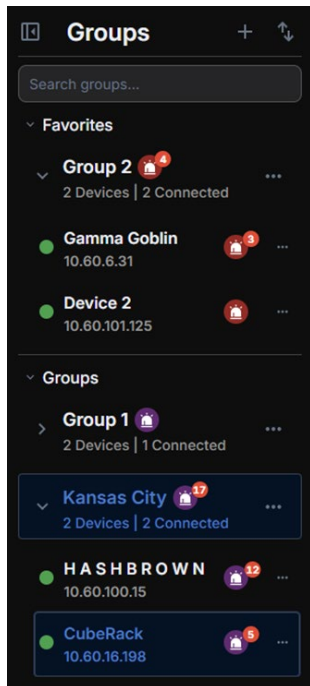


Figure 23: Device Notifications

The collapsible row will display the total number of connected devices and the total number of notifications. The alert row displays the alert type (via its icon), the alert title, the affected device, and the start time and day. If the alert has been active for more than a week, the full date is shown instead.

Notifications

TOTAL NOTIFICATIONS
Warning: 1 Alarm: 17 Fault: 17 Total: 35

7PM PEAK ALERT HOUR

Supply Temperature Too Low MOST COMMON ALERT

Device A MOST CRITICAL DEVICE

Most Critical Devices

- Device A: 17
- Device G: 13
- IoT Bench: 2

System-Wide Activity by Hour

Most Common Alerts

- Supply Temperature Too Low: 4
- BuildingPressureSensor Failure: 3
- Board missing: cooling 1: 2

Search device, group, or notification. Select date range. Warning Alarm Fault Clear Filters

Alert	Device	Time
> Group 2 1 Device 2		
> HISTORY 3 Devices 16		
> Kansas City 1 Device 17		
Supply Temperature Too Low	Device A	07:53 PM 03/30/2026
Unit Shutdown	Device A	07:53 PM 03/30/2026
Alive Timer (a)/alarms	Device A	07:44 PM 03/30/2026
OutdoorAirSensorRH Failure	Device A	07:43 PM 03/30/2026

Notification Info

Supply Temperature Too Low

Acknowledgement Required to Clear

Start Time: 07:53 PM | 03/30/2026

The supply air temperature is below the configured safety limit for 10 minutes. Unit is now shutdown until remedied.

Figure 24: Selecting an Alarm for More Details

Each alert may also be selected to view more details, as shown in Figure 25. The additional alert information includes the name, type (icon), start time, start day, start date, and a description of the alert.

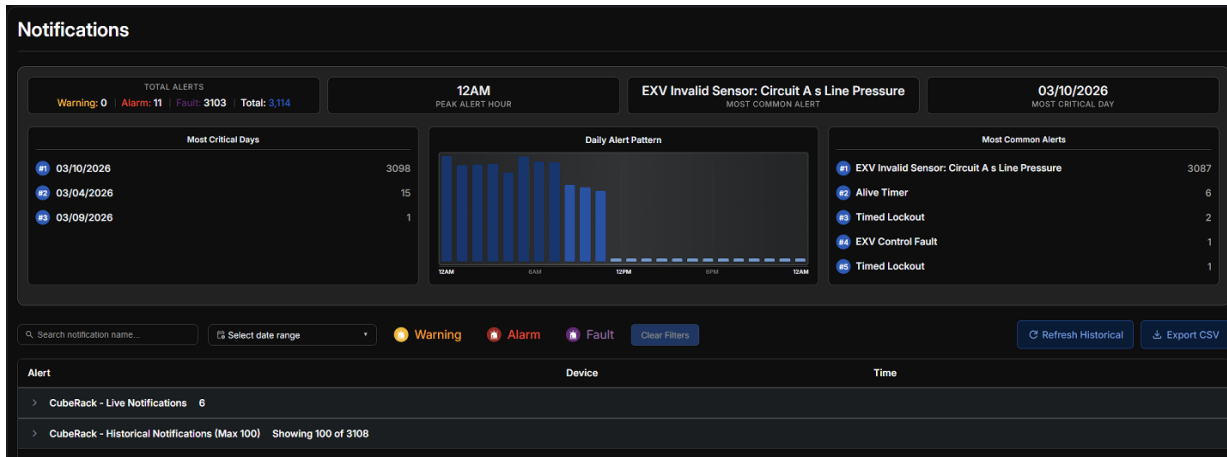


Figure 25: Alarms Screen Filtered Down to One Device

While an acknowledgement of notifications is not a feature, there are specific notifications that require an acknowledgement to clear.

See Figures 26 and 27 for an example of a status indication acknowledgement being required to clear and notification.

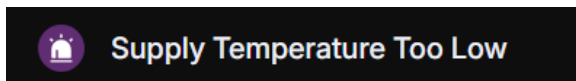


Figure 26: An Acknowledgement Required Notification

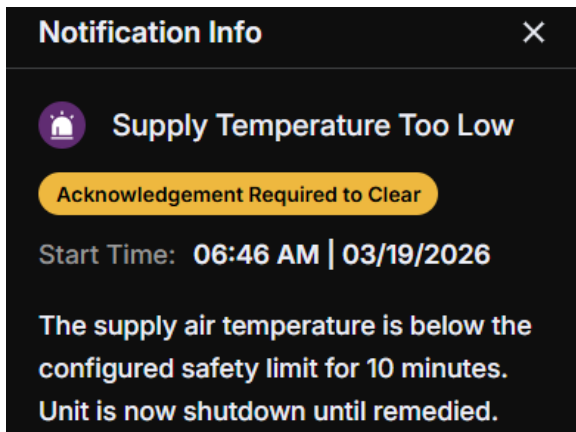


Figure 27: Acknowledgement Required Information

4. GROUP MONITORING

The group tab on the task panel allows users to get a high-level overview of the status of the devices in their group. Each device has its own dedicated widget in the group monitoring page with the following information:

- Name
- IP
- Alert Status (Icon)
- Mode Enable Temp, Occupied Status
- Mode Enable (current control) Setpoint
- Humidity (Control)
- Mode

Clicking the widget brings users to the main monitoring page of that device.

See Figure 28 for details.

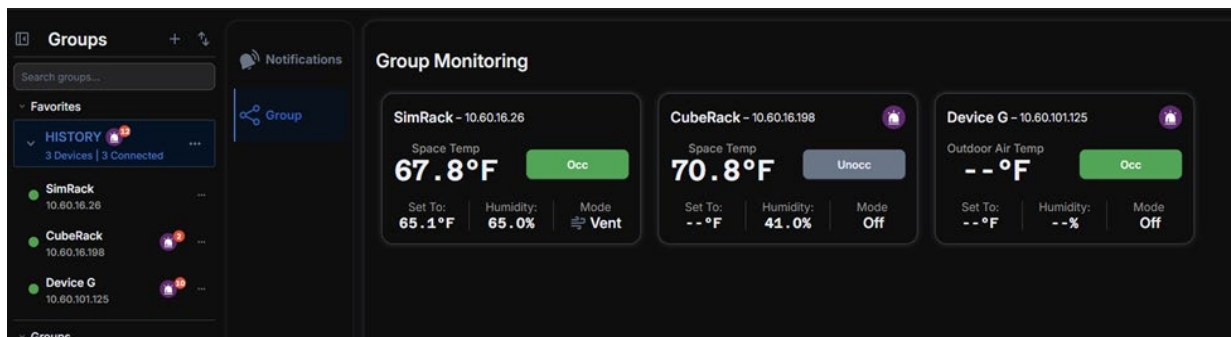


Figure 28: Group Monitoring Tab and Page with Two Widgets

5. MONITORING

Workstation Monitoring is divided into four main pages, with a universal top bar. The features and individual sections are broken down in this section. See Figure 29 for an overview of the Main Monitoring Screen.

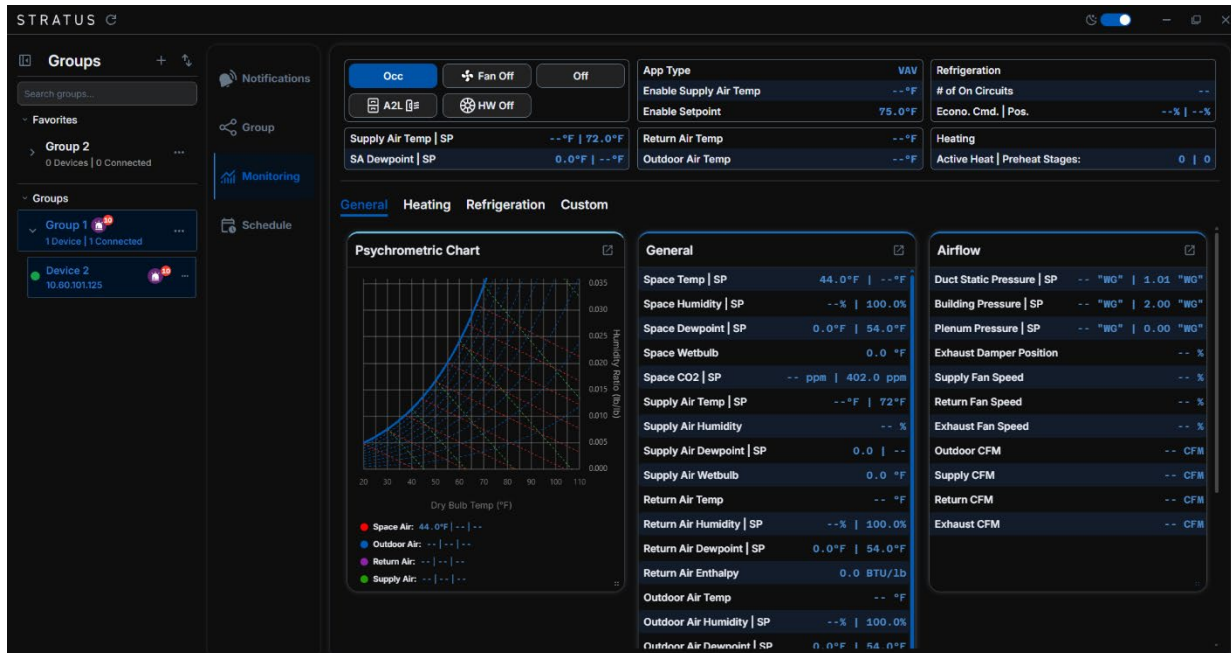


Figure 29: Overview of Main Monitoring Screen

5.1. Features

5.1.1. Hover Tooltips

Hover tooltips are present on all dashboards, tiles, tables, and graph items. For dashboards and tables, hovering over a row displays the name and the current value.

See Figure 30 for details.

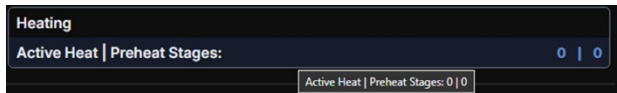


Figure 30: General Title/Table Hover Tooltip

5.1.1.1. Charts and Envelopes

For Psychrometric Charts and Envelopes, hovering will pinpoint the axes on the graph; whereas hovering over Trend-Logs will display the value and time at which the cursor is located.

See Figure 31.



Figure 31: Hover Tooltip for Trend Log Graphs

5.1.1.2. Titles

For tiles, hovering displays the status in more detail; for example, hovering over the A2L tile will explain if there is an A2L Leak detected in either the cabinet or airstream.

See Figure 32 for details.

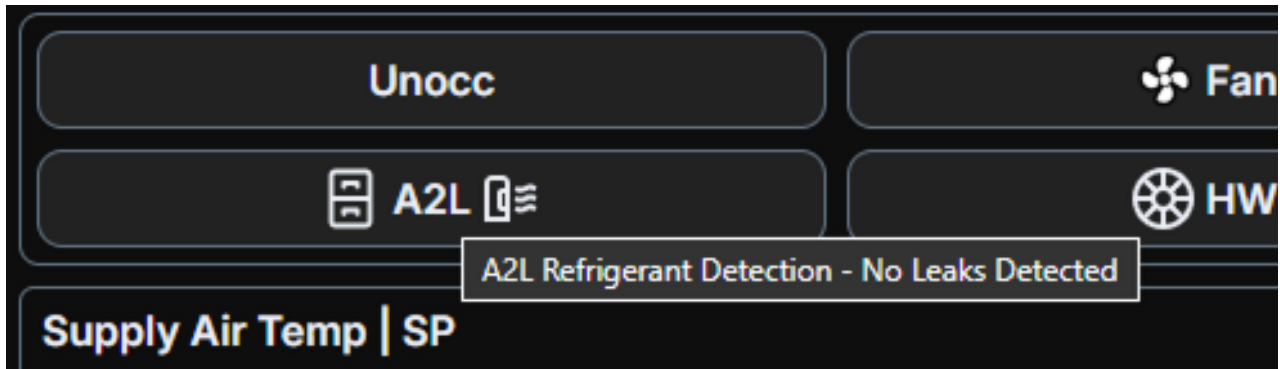


Figure 32: Hover Tooltip for A2L

5.1.2. Lockout Icons

While the cabinet icon and airstream icon will turn red depending on the suspected presence of a leak, the tooltip provides additional clarity for the alert. For items that are locked out, a red padlock icon will appear along with a hover tooltip shown in Figure 33.

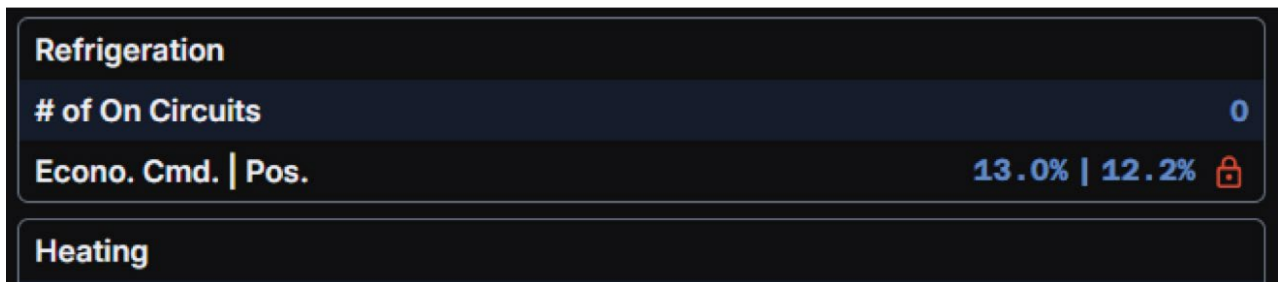


Figure 33: Locked Out Icon and Tooltip

5.1.3. Widget Pop-out Icons

Workstation also features the ability to pop out widgets into their own windows. All widgets (apart from the top bar) have an icon button that will allow them to take the widget, pop it out, and move it to another screen if they have multiple monitors.

See Figures 34 and 35 for details.

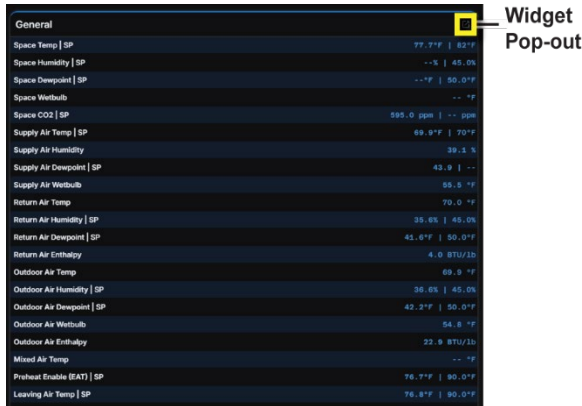


Figure 34: Widget Pop-out Icon



Figure 35: Widget Pop-out Window

5.1.3.1. Types of Widgets

The following are the five types of widgets available for user-adjustable monitoring:

- Psychrometric Charts
- Envelope Charts
- Trend Log Charts
- Dashboards
- Tables

All widget headers can be dragged for custom positioning. Additionally, all widgets can be resized using the icon in the bottom right corner. The minimum size for a widget is 1/3 of the main screen's width and height.

See Figure 36 for details.

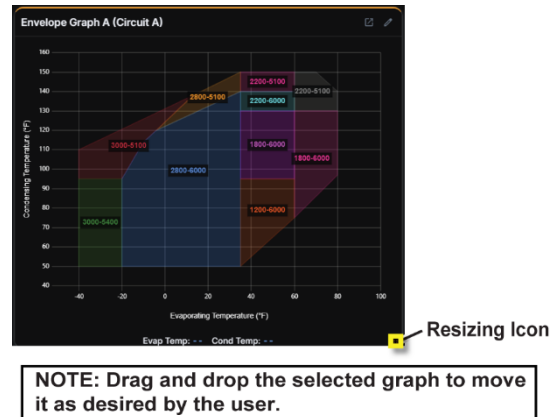


Figure 36: Example of How to Adjust the Widgets

5.2. Top Bar

The top bar is a fixed, non-editable section of the monitoring screen that appears on all monitoring sections. The top bar provides a quick assessment of how the unit operates and is being controlled. See the list below for an overview of the information provided in the top bar:

- Occupied Status, Fan Switch Status, Mode, A2L Leak Detection, Heat Wheel On/Off
- SAT/SAT SP and SA Dewpoint/SP
- App Type, Enable Temp, Enable SP
- Return Air and Outdoor Air Temp
- Number of Active Refrigeration Circuits, Economizer Command and Position
- Number of Active Heat and Preheat Stages

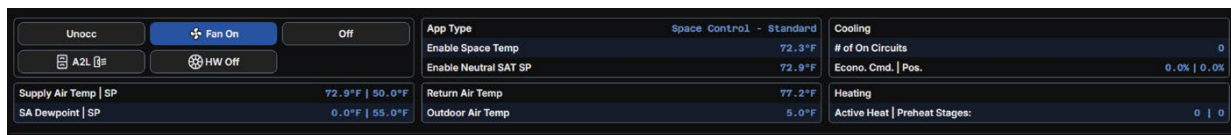


Figure 37: Top Bars

NOTE: The top bar is a non-configurable element that exists at the top of every monitoring page.

5.3. General

The general monitoring layout is comprised of three main widgets:

- Psychrometric Chart
- General Dashboard
- Airflow Dashboard

These widgets can be moved and resized at the user's discretion.

See Figure 38 below for more information.

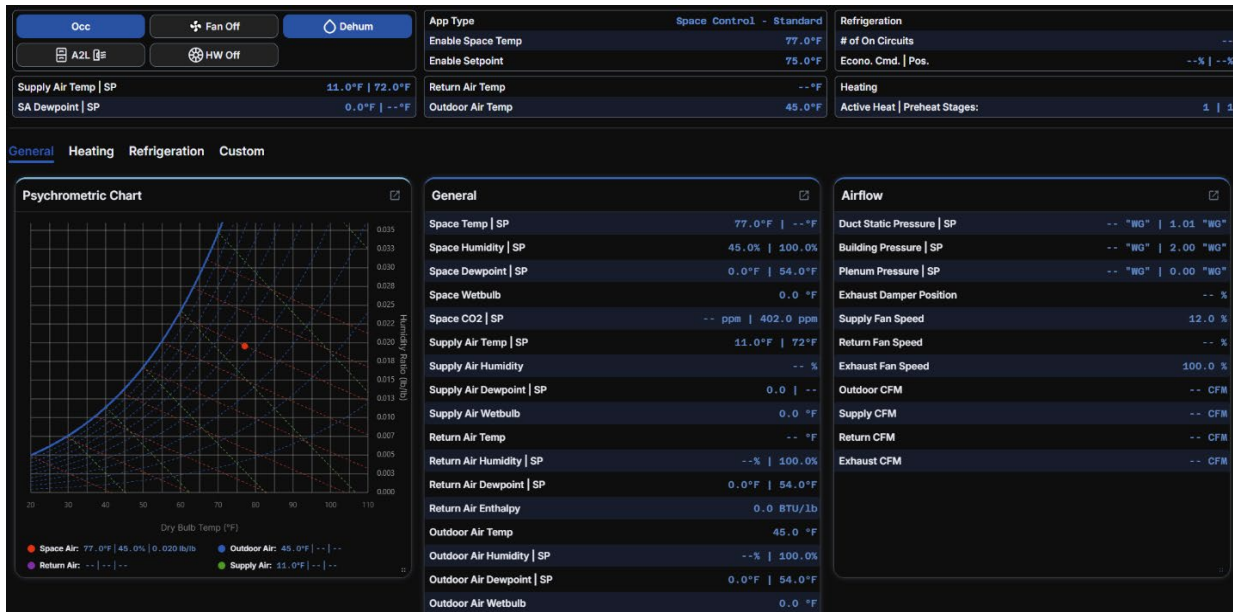


Figure 38: General Monitoring Layouts

5.4. Heating

The heating monitoring screen contains three tables, as shown in Figure 39:

- Heat Pump Table (Displays the status of the refrigeration cycle).
 - This table will expand in columns depending on how many circuits and compressors exist.
 - For each circuit + 1 column, along with each compressor in the circuit + 1 column.
- Heating Table (Displays the stage status information).
 - For each stage + 1 column
- Preheat Table (Displays the stage status information).
 - For each stage + 1 column

These tables can be expanded and moved at the user's discretion.

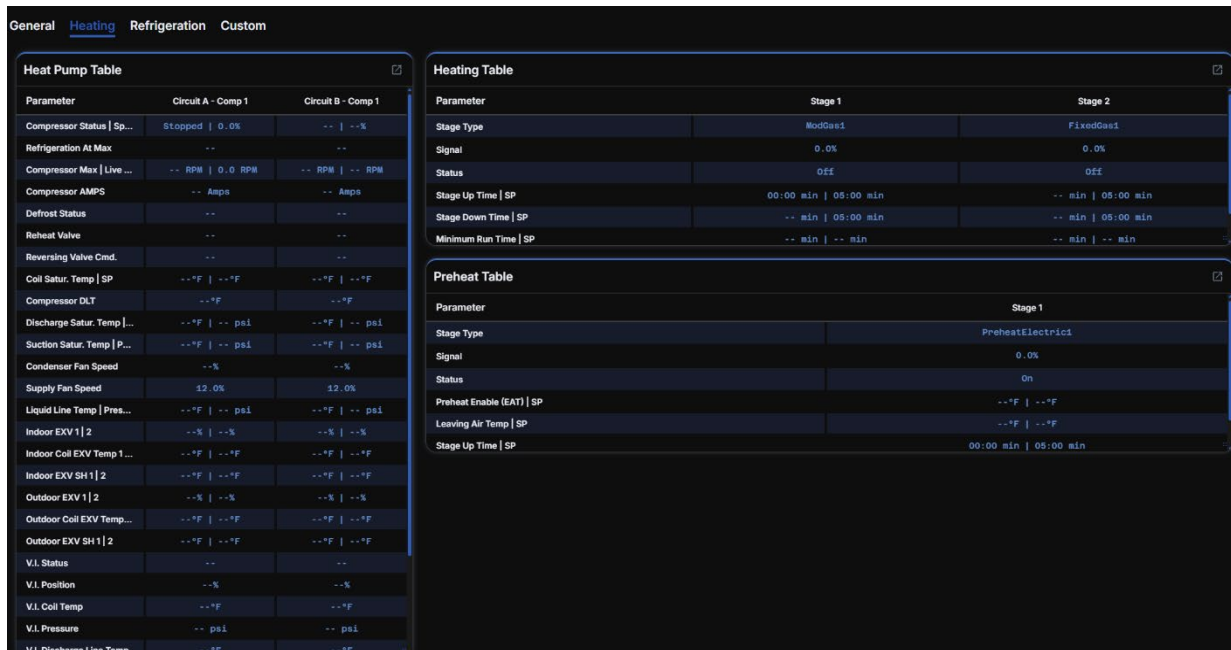


Figure 39: Heating Monitoring Page

5.5. Refrigeration

The refrigeration monitoring page contains a table and an envelope chart.

See Figure 40 for details.

- Refrigeration Table (Displays the status of the refrigeration cycle).
- Envelope Graph (Displays the evaporating and condensing temperatures)
 - For every circuit, + 1 envelope chart.

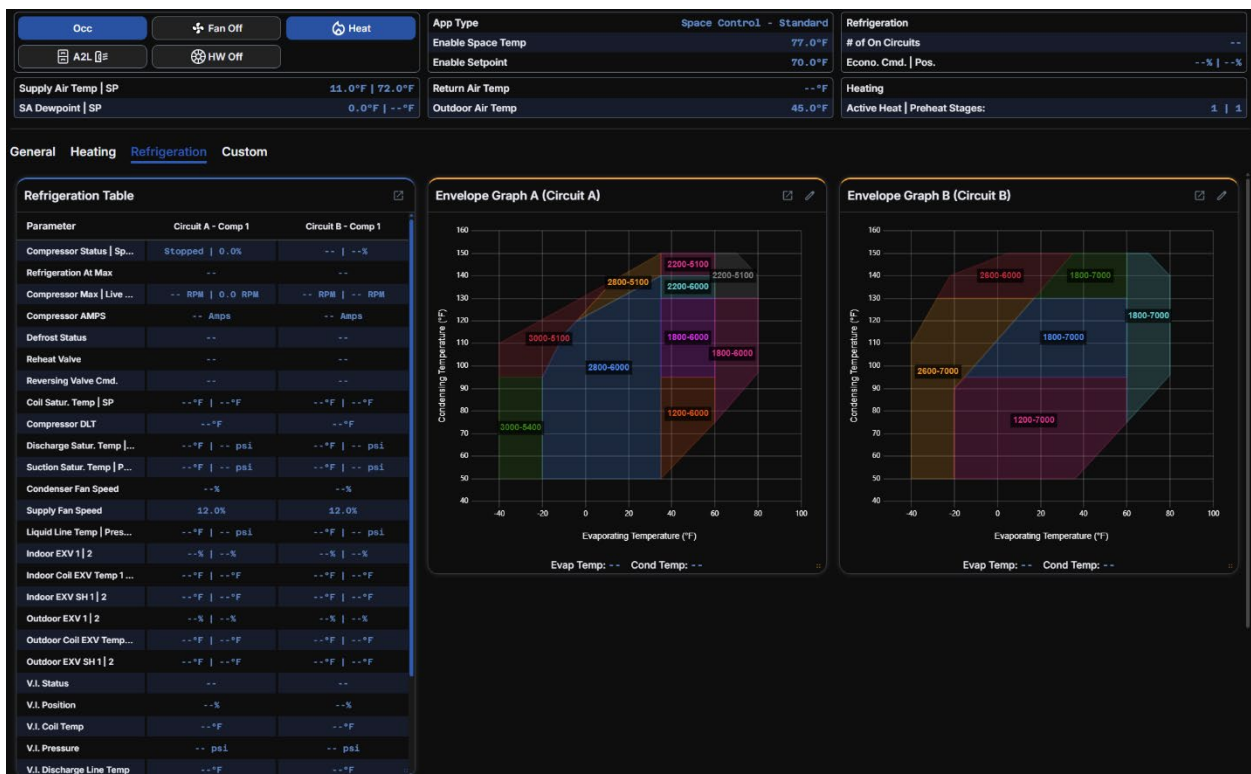


Figure 40: Cooling Monitoring

5.6. Custom Monitoring

Custom monitoring is a tool that allows users to customize their own dashboard with the following items:

- Psychrometric Chart
- Envelope Chart(s)
- Trend-Log Chart(s)
- Dashboard(s)

To get started, users navigate to the custom module shown in Figure 41.

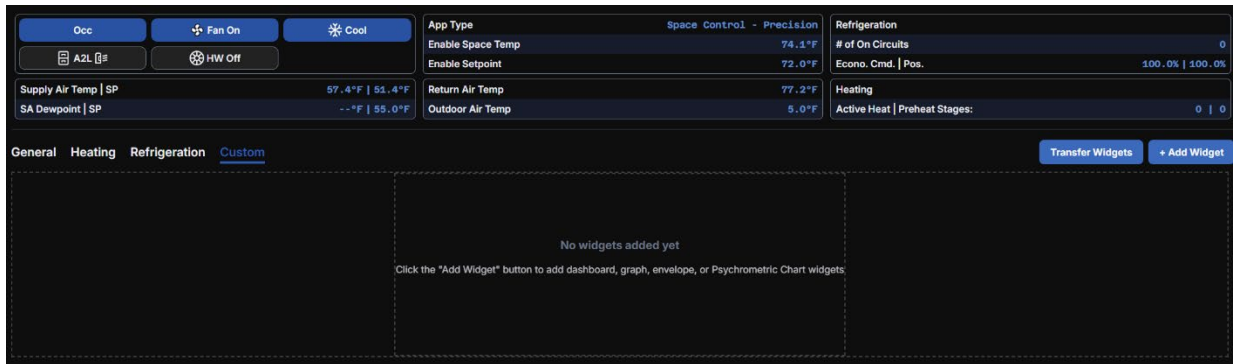


Figure 41: Empty Custom Monitoring Page

Custom Monitoring (Continued)

Users will then press the “+ Add Widget” Button to bring up a pop-up shown below in Figure 42. Figure 43 displays the different Widget Types Users can choose from.

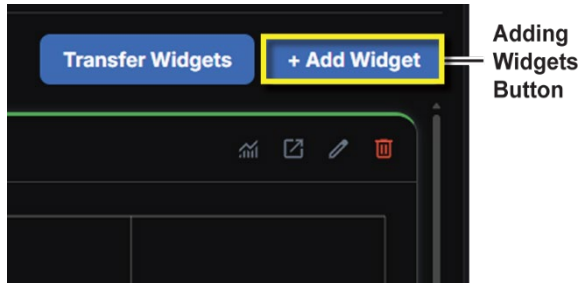


Figure 42: Add Widget Button

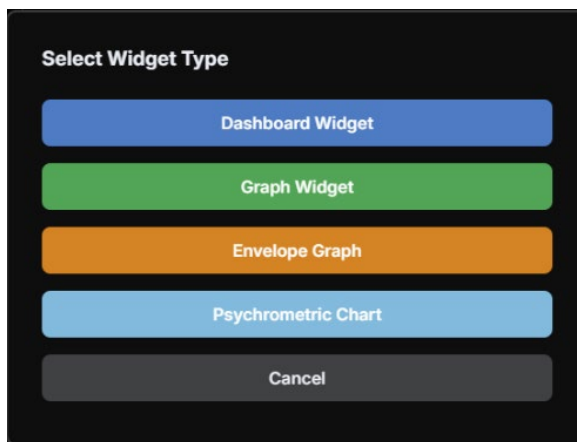


Figure 43: Widget Types

5.6.1. Psychrometric Charts

There are no customization elements for the Psychrometric chart. However, users can select the circuit they want to display for the envelope chart. They could also remove the chart from their dashboard altogether.

NOTE: The Envelope Chart defaults to display Circuit A as shown in Figure 44.

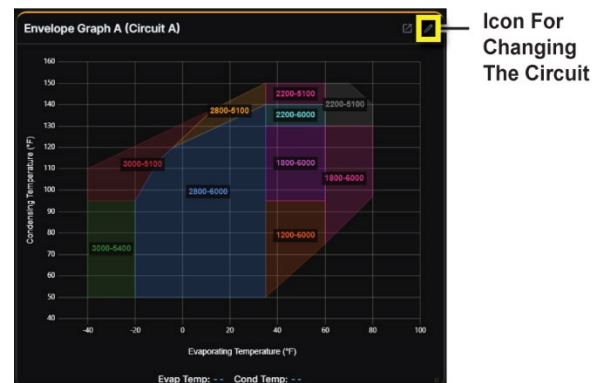


Figure 44: Circuit A

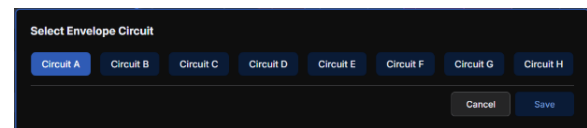


Figure 45: Selecting A Circuit

When using custom monitoring, all widgets can be removed using the edit icon shown in Figure 46.



Figure 46: Delete Icon for All Widgets

5.6.2. Dashboards

Dashboard widgets will initially appear blank, but upon pressing the edit icon, users can select the data points they want to monitor.

See Figures 48 and 49 for details.

Users can also edit dashboard titles for customization or to search for information. Press the **“Clear All”** button to undo the entire selection of points.

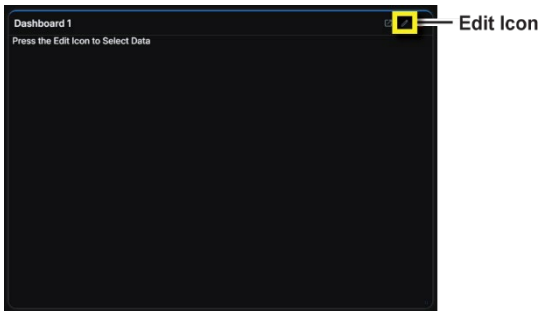


Figure 47: Edit Icon to Select Data Points

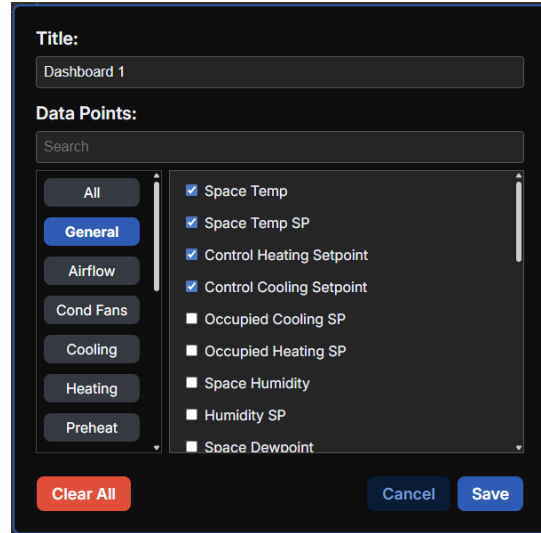


Figure 49: Example of Selected Data Points

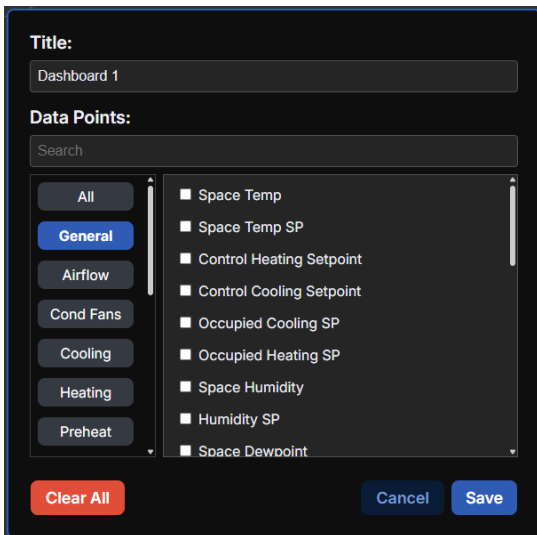


Figure 48: Overview of Selectable Data Points

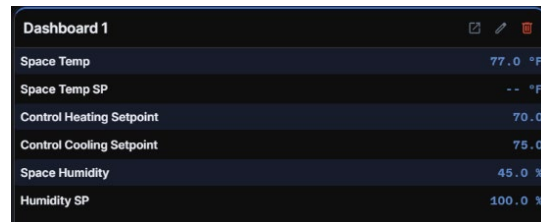


Figure 50: Display of Selected Data Points

5.6.3. Graphs

Graph widgets work similarly to dashboards; however, users can only select up to five points on the graph.



Figure 51: Selecting a Graph

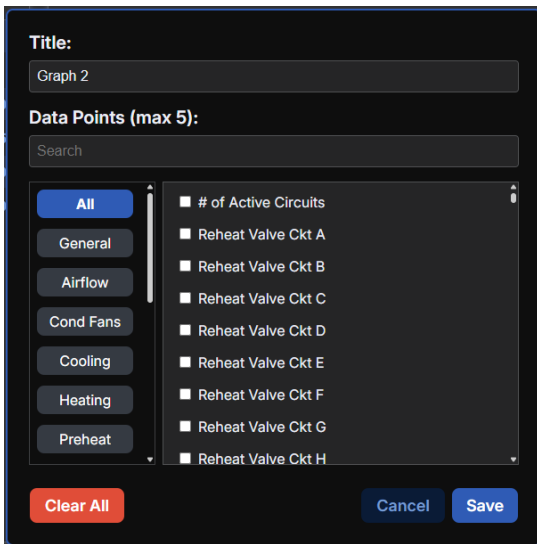


Figure 52: Overview of Selectable Graph Data Points

5.6.4. Transferring Widgets

Users can transfer their widget setup to another device using the “**Transfer Widgets**” button. To transfer, users select the device they want to transfer to, and those widgets will appear in the custom monitoring section of the selected device.

See Figures 53 and 54 for details.

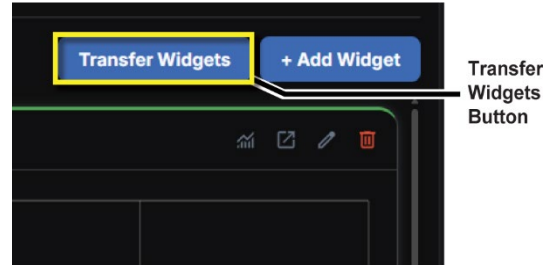


Figure 53: Transfer Widgets Button

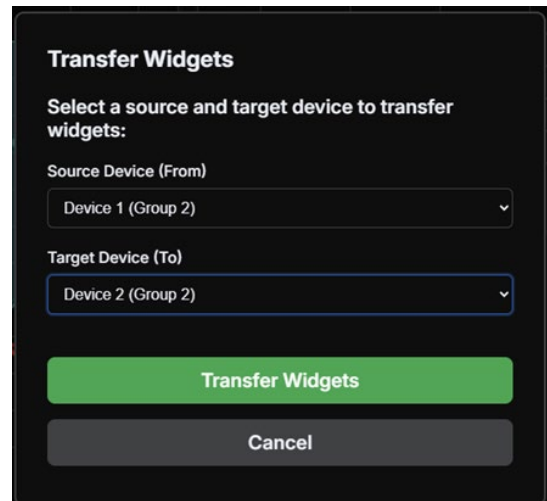


Figure 54: Transfer Widgets Module

6. SCHEDULE

The schedule is composed of three primary items: a weekly schedule, a holiday schedule, and a device time adjustment. It includes UX enhancements that make scheduling and time tracking easier. Figure 55 displays the layout of the schedule section.

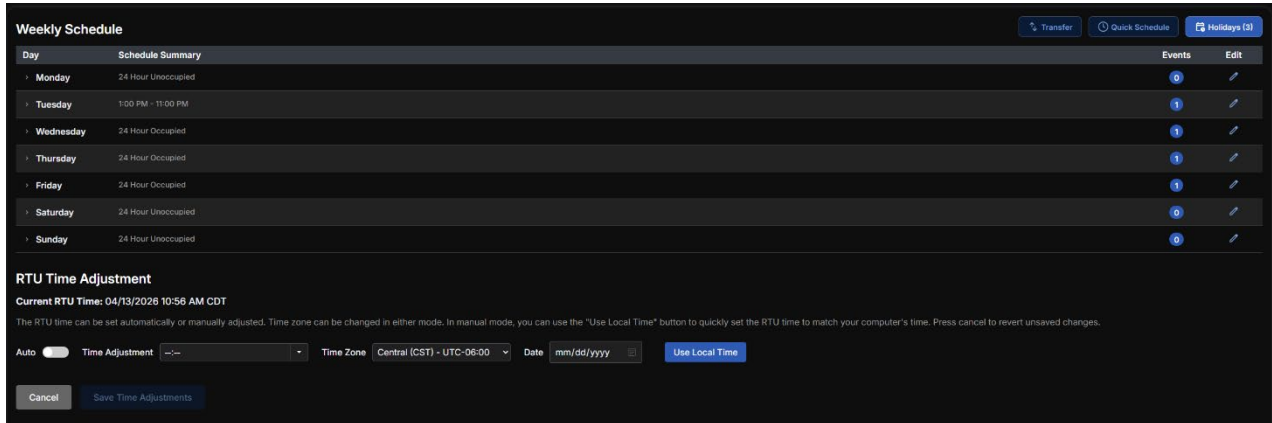
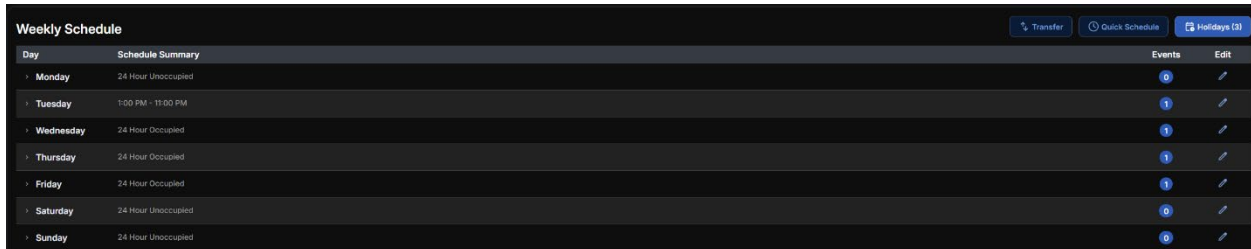


Figure 55: Schedule Layout

6.1. Weekly Schedule

The weekly schedule layout is composed of a table with a row for each day of the week. Each row lists the day, a summary of the schedule, the total number of events, and a quick edit button.

See Figure 56 for details.



Day	Schedule Summary	Events	Edit
Monday	24 Hour Unoccupied	0	
Tuesday	1:00 PM - 11:00 PM	1	
Wednesday	24 Hour Occupied	1	
Thursday	24 Hour Occupied	1	
Friday	24 Hour Occupied	1	
Saturday	24 Hour Unoccupied	0	
Sunday	24 Hour Unoccupied	0	

Figure 56: Weekly Schedule Layout

Upon expansion, users are provided with a visual representation of the schedule. See Figure 57, page 30, for details. The green represents when the unit is occupied, with a hoverable dot that displays in quick fashion the event that has been set. Users can edit the schedule in three clickable areas: the edit icon, the dot, or the event tab shown in Figure 57, page 30. Figure 59, page 31, depicts the pop-up that appears to enter the schedule edits.

In the editing schedule pop-up, users have two quick access buttons to either clear the schedule (make it fully unoccupied) or fill the schedule (make the entire day occupied). Marking those checkboxes will remove the start and end time entries. The schedule Start and End times will default to 8 AM and 5 PM, see Figure 59, page 31, but users can use the dropdown to set the Hour, Minute, and Date. Users can also add more events to create separate time blocks for occupied time.

All events will be listed as occupied time.

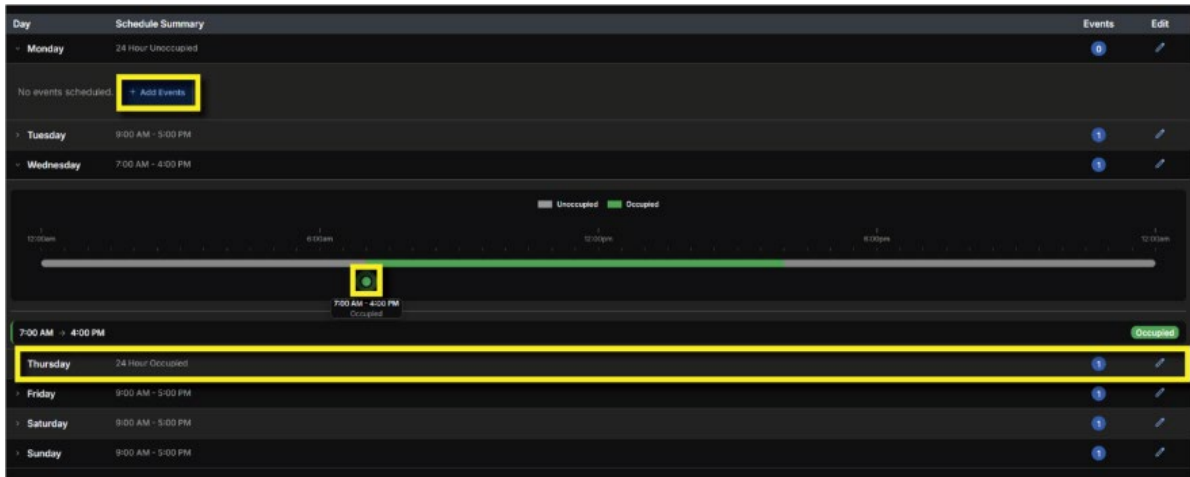


Figure 57: Methods of Editing the Schedule for Occupied or Unoccupied

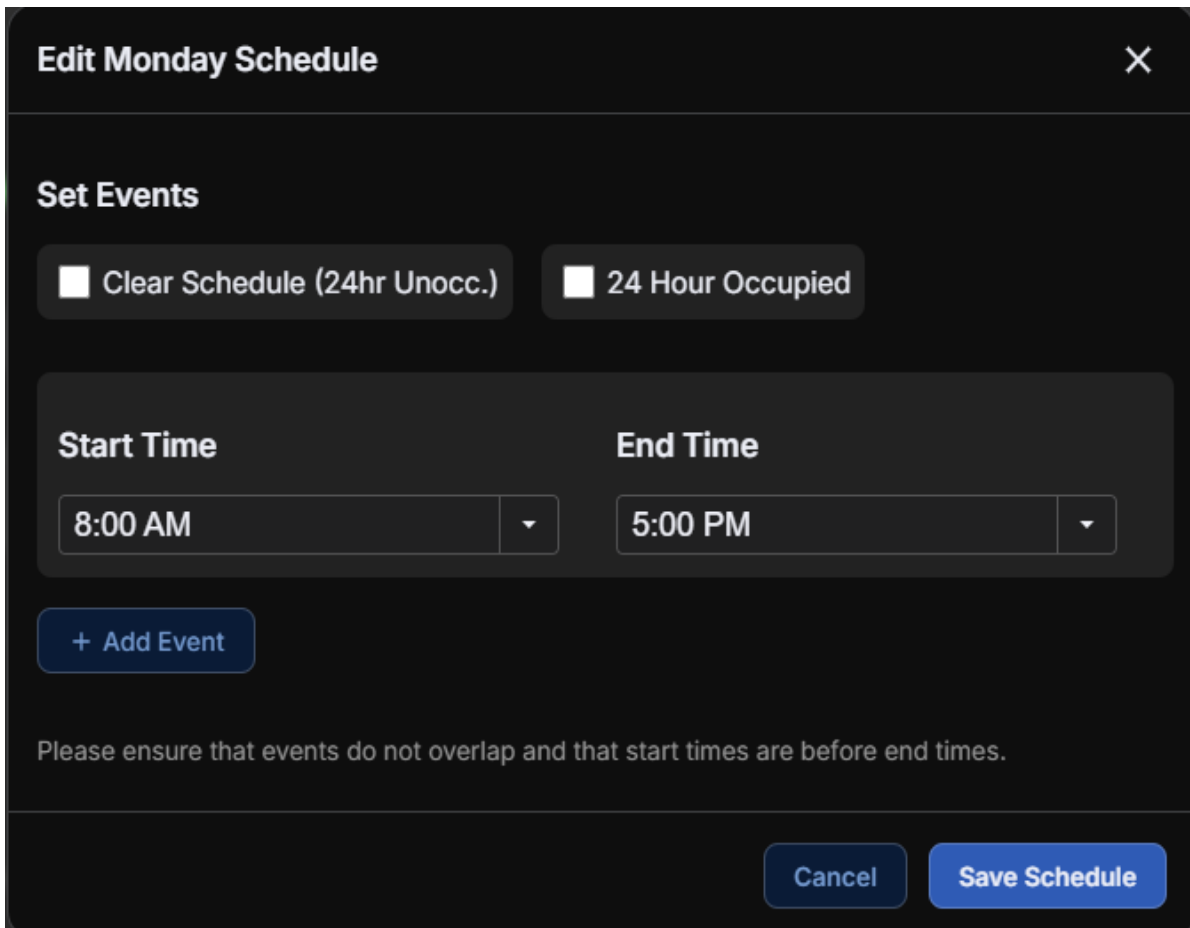


Figure 58: Edit Default Schedules

Edit Monday Schedule

✕

Set Events

Clear Schedule (24hr Unocc.)

24 Hour Occupied

Start Time

8:00 AM
▼

End Time

5:00 PM
▼

Hour	Minute	Period
01	00	AM
02	05	PM
03	10	
04	15	
05	20	
06	25	

that start times are before end times.

Cancel

Save Schedule

Figure 59: Edit Modifiable Schedules

6.2. Quick Schedule

The Quick Schedule features a similar pop-up as the weekly schedule, but users can select multiple days to apply the schedule to. For example, users can apply the same event setup for multiple days at one time, rather than having to manually enter it for each day, as shown in Figure 60. There are also quick checks for users who want to pick all days, weekdays, or weekends. Selecting the quick check buttons will check off (and/or remove) those days.

Quick Schedule ✕

Select days to apply events to:

Monday
 Tuesday
 Wednesday
 Thursday
 Friday
 Saturday
 Sunday

Set Events

Clear Schedule (24hr Unocc.)
 24 Hour Occupied

Start Time **End Time**

8:00 AM 5:00 PM

Please ensure that events do not overlap and that start times are before end times.

Figure 60: Quick Schedule Module

6.3. Holidays

Holidays do not follow the typical weekly schedule. The holiday module is a sidebar panel that can be opened via the holiday button (which shows how many exist). The holidays are organized in a month-by-month fashion, where days that have already passed are hidden (but can be made visible via a checkbox).

See Figure 61.

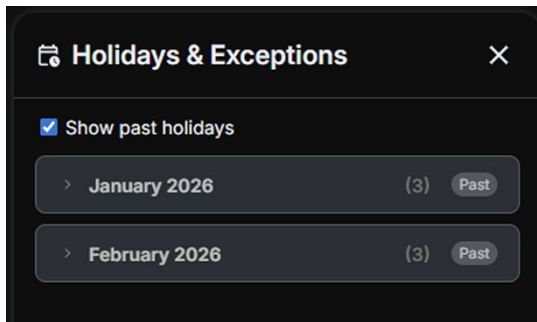


Figure 61: Holiday Overview

All month-year tabs are expandable and collapsible, as are the individual days. For each day, a user can either edit the individual schedule or delete the day from the holiday schedule.

See Figure 62.

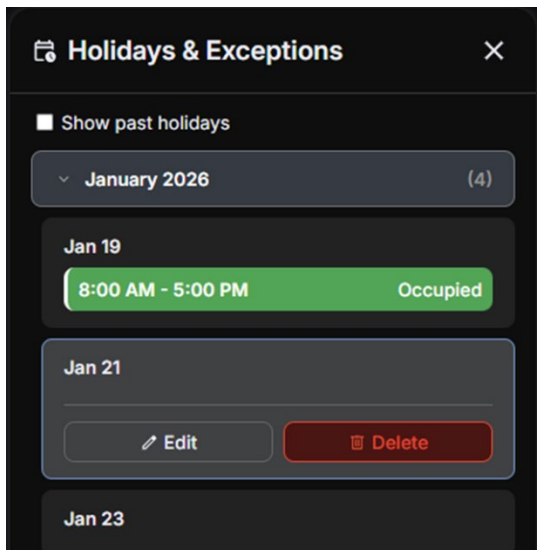


Figure 62: Holiday Expanded Tabs

The editing holiday schedule pop-up module is identical to the weekly schedule pop-up. Users have two options to add/edit holidays. The first option is to edit the dates selected.

See Figure 63 for details.

Alternatively, users can select/remove individual days, set them as recurring for every year up to 2050, or clear all holidays.

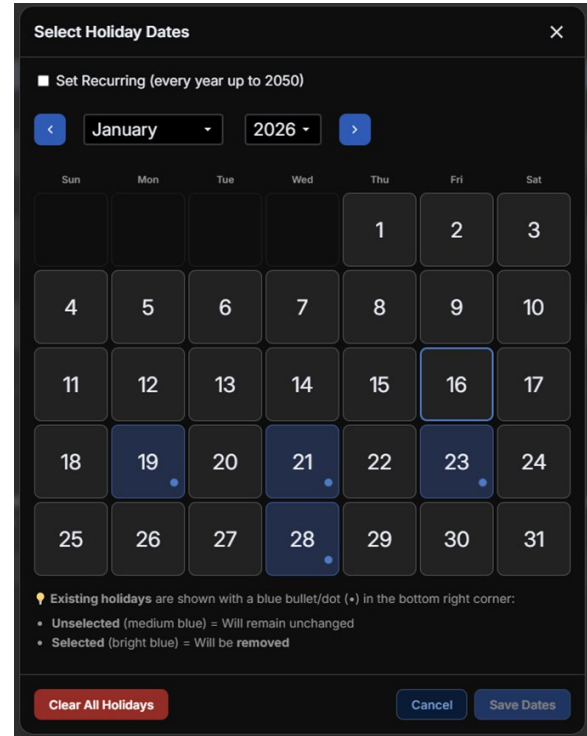


Figure 63: Edit Holiday Date Selection

Holiday Schedule (Continued)

The holiday quick schedule module lets users select any day in the calendar year up to 2050 (or set it as recurring) and apply a schedule to those days. The event lineup is identical to the other edited schedule modules.

See Figure 64 for details.

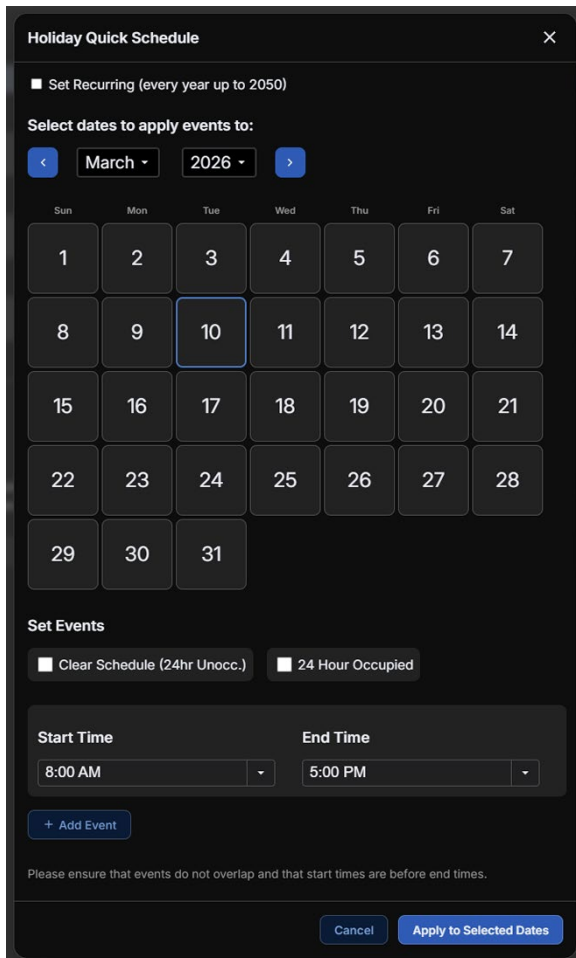


Figure 64: Holiday Quick Schedule Module

6.4. Transfer Schedule

If a user has multiple devices that need to run the same schedule, the user may transfer the schedule of the device they are on to another existing device in their workstation.

See Figure 65.

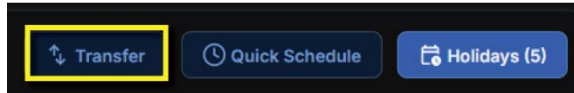


Figure 65: Transfer Schedule Icon

Additionally, users can choose to send over their weekly schedule, holidays, or both via a checkbox selection methodology identical to the export groups module.

See Figure 66 for details.

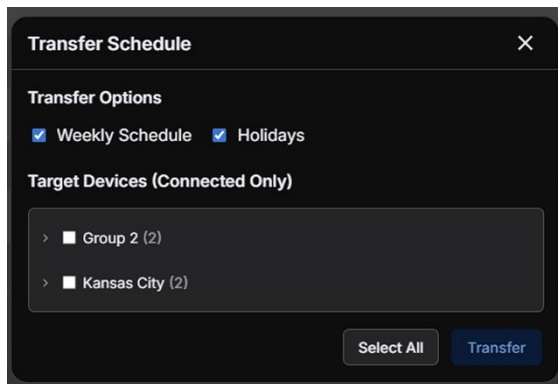


Figure 66: Transfer Schedule Module

6.5. Time Adjustment

RTU Time adjustment is the current time that the STRATUS Unit Manager holds. As such, users can adjust the time throughout Workstation with a few additional features.

Users can adjust the time zone, whether it is in auto or manual mode. To change the time and date, users must turn off the auto toggle.

The time adjustment has a dropdown identical to the schedule popups, and the date has a calendar selection system.

When the unit manager is connected to the network and the RTU is set to Auto, STRATUS Workstation will automatically detect the correct time and switch to UTC.

Lastly, the **“Use Local Time”** button will set all information equal to their machine’s current time. Thus, the time zone on the user’s computer will be used on the Device. Press **“Save”** for all new settings to be enabled.

NOTE: Any and all changes must be saved, even the auto-manual toggles.

All information can be found in Figures 67-70.

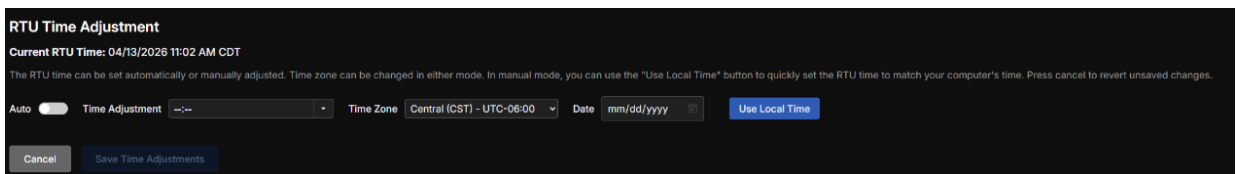


Figure 67: RTU Time Adjustment Overview

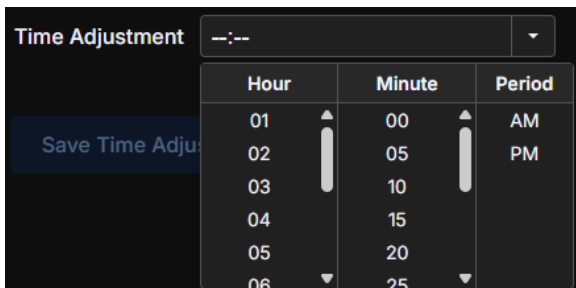


Figure 68: RTU Time Adjustment Drop-down

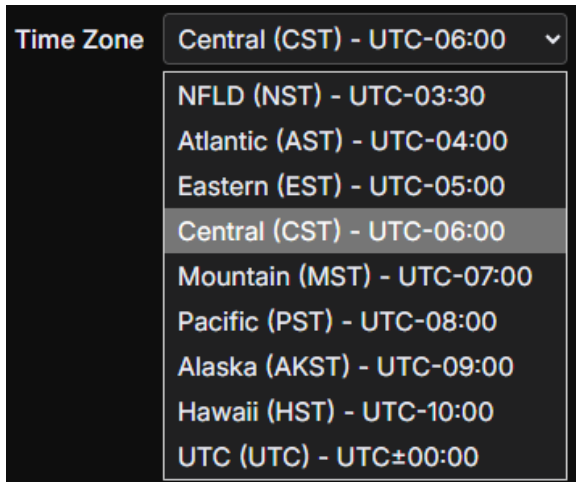


Figure 69: RTU Time Zone Dropdown

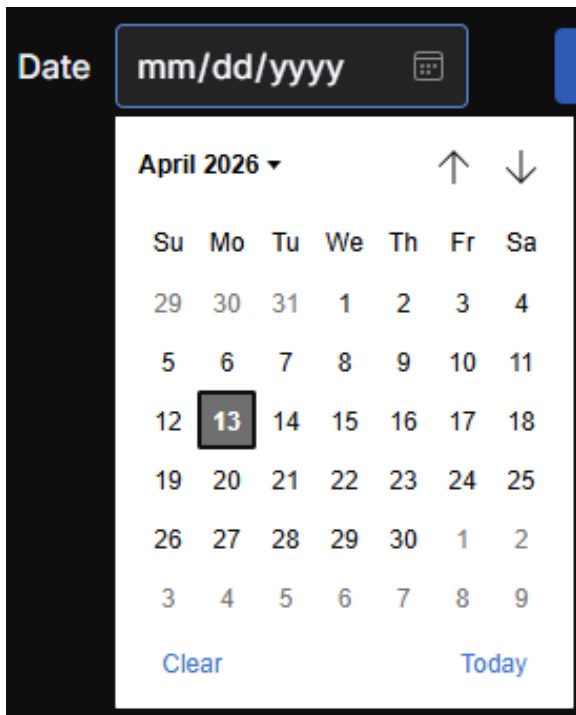


Figure 70: RTU Date Dropdown



7. REVISION LOG

STRATUS Workstation Change Log	
Revision and Date	Change
Rev A, May 05, 2026	Initial Release



AAON Controls Support:

Support.Controls@aaon.com

Controls Support Website:

www.aaon.com/aaon-controls-technical-support

AAON Factory Technical Support:

Technical.Support@aaon.com

Phone:

866-918-1100

Monday through Friday, 7:00 AM to 5:00 PM Central Time

Before calling Technical Support, have the model and serial number of the unit available.

For replacement parts, contact your local AAON Representative.

Are you an AAON Rep? Visit My AAON to open new support tickets, communicate directly with our support teams, and track your support progress in one place.

It is the intent of AAON to provide accurate and current product information. However, in the interest of product improvement, AAON reserves the right to change pricing, specifications, and/or design of its product without notice, obligation, or liability.

AAON® is a registered trademark of AAON, Inc., Tulsa, OK. BACnet® is a registered trademark of ASHRAE Inc., Atlanta, GA. BITZER is a registered trademark of BITZER® Kühlmaschinenbau GmbH. Copeland Scroll™ is a registered trademark of Emerson Electric Co., Saint Louis, MO.

Copyright © AAON, all rights reserved throughout the world.

AAON® is a registered trademark of AAON, Inc., Tulsa, OK. AAON® assumes no responsibility for errors or omissions in this document.

This document is subject to change without notice.