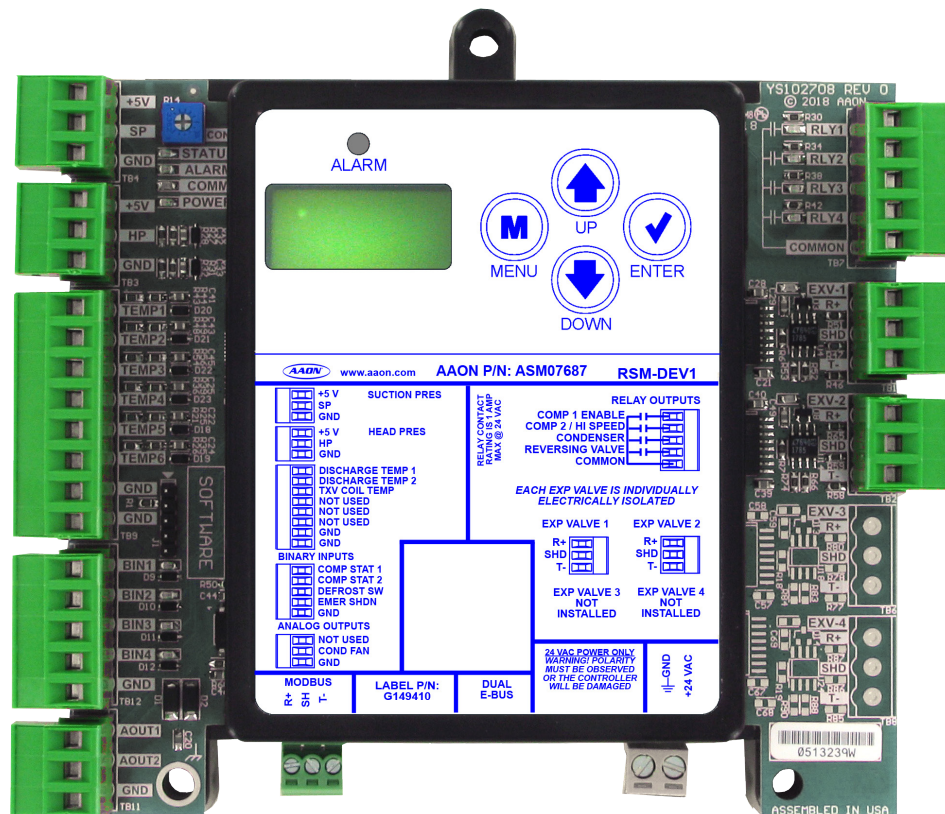




RSM-DEV1 Module Technical Guide

ASM07687
Software SS1192

WARNING: The expansion valves installed and this module are a factory specified deviation. Contact Controls Tech support before attempting any user configuration or maintenance.



RSM-DEV1 REVISION LOG

REVISION AND DATE	CHANGE
Rev. A, December 15, 2023	Original

RSM-DEV1 PARTS REFERENCE

PART DESCRIPTION	PART NUMBER
RSM-DEV1	ASM07687 Software SS1192
VCCX2 Controller	ASM01698 Software SS1088
Prism 2	ASM02533
IP Module Kit	ASM01902
CommLink 5	ASM01874
E-BUS Cable Assembly 1.5 ft., 3 ft., 10 ft., 25 ft., 50 ft., 75 ft., 100 ft., 150 ft., 250 ft., and 1000 ft. spool	G029440 (1.5 ft.), G012870 (3 ft.), G029460 (10 ft.), G045270 (25 ft.), G029510 (50 ft.), G029530 (75 ft.), G029450 (100 ft.), G029470 (150 ft.), V36590 (250 ft.), G018870 (SPOOL)
Modular Service Tool SD - Operator Interface	ASM01895



www.aaon.com

**All manuals are also available for download from
www.aaon.com**

AAON
2425 South Yukon Ave.
Tulsa, OK 74107-2728
www.aaon.com
Factory Technical Support Phone: 918-382-6450
AAON® Controls Support: 866-918-1100

It is the intent of AAON® to provide accurate and current product information. However, in the interest of product improvement, AAON® reserves the right to change pricing, specifications, and/or design of its product without notice, obligation, or liability.

Rev A
Copyright December 2023. AAON, Inc.
All brand names, trademarks and registered trademarks are the property of their respective owners. Information contained within this document is subject to change without notice. All rights reserved
AAON® is a registered trademark of AAON, Inc., Tulsa, OK.
Danfoss VFD® is a registered trademark of Danfoss A/S, Tallahassee, FL
DMQ® is a registered trademark of DunAn Microstaq, Inc. of Austin, TX.
Sporlan is a division of Parker Hannifin Corporation, Washington, MO
Yaskawa is a registered trademark of YASKAWA Electric Corporation, Japan

TABLE OF CONTENTS

OVERVIEW	5
RSM-DEV1 Overview	5
INSTALLATION	6
Electrical and Environmental Requirements	6
Dimensions	7
Wiring	8
Inputs and Outputs.....	10
SEQUENCE OF OPERATIONS	12
Modes of Operation	12
Staging	13
Envelope Protection.....	20
Component Operation.....	21
LCD SCREENS	22
LCD Display Screen and Navigation Keys.....	22
Main Screens Map	23
Screen Descriptions.....	24
TROUBLESHOOTING	33
LED Diagnostics	33
Sensor Testing	34
Transducer Testing.....	36
APPENDIX A: VFD CONFIGURATION	38
Yaskawa V1000 Configuration	38
APPENDIX B: S3C VALVE	39
S3C Valve Wiring Information	39

FIGURES

Figure 1:	RSM-DEV1 Dimensions	7
Figure 2:	RSM-DEV1 Inputs Wiring.....	8
Figure 3:	RSM-DEV1 Outputs Wiring.....	9
Figure 4:	Danfoss VZH028, VZH035, VZH044 Envelope	20
Figure 5:	Danfoss VZH052 and VZH065 Envelope	20
Figure 6:	Copeland ZPV0662E Envelope	20
Figure 7:	Copeland ZPV0962E Envelope.....	20
Figure 8:	LCD Display and Navigation Keys.....	22
Figure 9:	RSM-DEV1 LED Locations	33
Figure 10:	S3C Valve Module Stepper Valve Locations.....	39

TABLES

Table 1:	RSM-DEV1 Electrical and Environmental Requirements	6
Table 2:	RSM-DEV1 Inputs and Outputs	10
Table 3:	Navigation Key Functions.....	22
Table 4:	Editing Key Functions	22
Table 5:	Main Screens	24
Table 6:	Module Screens	24
Table 7:	System Status Screens	25
Table 8:	Sensor Status Screens	25
Table 9:	Alarms Screens.....	26
Table 10:	Alarm History Screens	27
Table 11:	Setpoint Status Screens	28
Table 12:	Yaskawa VFD Screens	29
Table 13:	Danfoss VFD Screens	30
Table 14:	DMQ EXV Screens.....	31
Table 15:	Sporlan EXV Screens	32
Table 16:	Temperature, Resistance, and Voltage for Discharge Sensors	34
Table 17:	Discharge Thermistor Temperature and Resistance.....	35
Table 18:	Suction Pressure Transducer Chart for R410-A Refrigerant	36
Table 19:	Head Pressure Transducer Chart	37

RSM-DEV1 Overview

WARNING: Do not attempt to configure, replace, or modify this module unless specifically directed by Controls Tech Support. Unauthorized modifications or configurations could lead to damage to the equipment.

Features

This module is a deviation of the RSMVHPQ to allow configuration of nonstandard EXV valve types. See **Page 32** for valve configuration screens and **Appendix B** for S3C Valve Controller examples.

The ASM07687 Refrigerant System Module for VFD Compressors with Independent Electronic Expansion Valve (EXV) Control (RSM-DEV1) monitors and controls the refrigeration circuits of the AAON unit. It connects to DMQ Universal SuperHeat Controller (USHC) or Sporlan S3C Superheat Controller(s) and is used with the VCCX2 controller.

The RSM-DEV1 is for units with the following configurations:

- Must have at least one VFD compressor on the first circuit of the first module connected using Modbus. The second module, if used, can use a non-VFD compressor.
- Must have at least one EXV.
- One or two circuits with no reheat, or reheat on the second circuit.

This module automatically configures condensers, EXVs, and compressors based on unit selection.

The RSM-DEV1 uses an E-BUS cable to connect to the VCCX2 Controller. Up to four RSM-DEV1 Modules can be connected. There are two E-BUS expansion ports which allow connection to the VCCX2 Controller, communicating sensors, and other E-BUS modules.

The RSM-DEV1 is configured using Prism 2 software.

The RSM-DEV1 provides five analog inputs, four binary inputs, four relays, and one analog output. See **Figures 3 and 4, pages 9 and 10**, for wiring.

The RSM-DEV1 provides the following:

- Modulates the compressors or controls staging to satisfy the Suction Coil (Saturated) Temperature during Cooling Mode. During Dehumidification Mode, it controls the compressors to the Suction (Saturation) Temperature Setpoint.
- Modulates the condenser fan(s) to maintain the Head Pressure Setpoint.
- Monitors the performance of the superheat controller to maintain the Superheat Setpoint of each evaporator coil.
- Provides alarms and safeties for the compressor and condenser operation.
- Provides a 2 x 8 LCD character display and four buttons that allow for status of system operation, system setpoints, system configurations, sensors, and alarms.

INSTALLATION

Electrical and Environmental Requirements

General

Correct wiring of the AAON unit controller and its modules is the most important factor in the overall success of the installation process. The AAON unit controller and modules are installed and wired at the AAON factory. Some of the following information may not apply if the unit was pre-wired at the factory. However, if troubleshooting of the controller or modules is required, it is a good idea to be familiar with the system wiring.

Wiring

The modules must be connected to an 18-30 VAC power source of the proper size for the calculated VA load requirements. All transformer sizing should be based on the VA ratings listed in **Table 1, this page**.

Control Device	Voltage	VA Load	Operating Temperature	Humidity (Non-Condensing)
RSM-DEV1	18-30 VAC	18	-22°F to 158°F -30°C to 70°C	0-95% RH
	Inputs		Resistive Inputs require 10KΩ Type III Thermistor	
	Outputs		24 VAC Inputs provide 4.7KΩ Load Relay Outputs: 1 amp maximum per output.	

Table 1: RSM-DEV1 Electrical and Environmental Requirements

NOTE: If the temperature at the controller is below -4°F (-20°C), the display refresh rate could be less responsive.

WARNING: When using a single transformer to power more than one controller or expansion module, the correct polarity must always be maintained between the boards. Failure to observe correct polarity will result in damage to the AAON unit controller, RSM-DEV1, and any associated module.

Please carefully read and apply the following information when wiring the unit controller, RSM-DEV1, and any associated module.

1. All wiring is to be in accordance with local and national electrical codes and specifications.
2. All 24 VAC wiring must be connected so that all ground wires remain common. Failure to follow this procedure can result in damage to the controller and connected devices.
3. Minimum wire size for 24 VAC wiring should be 18-gauge.
4. Minimum wire size for all sensors should be 24-gauge. Some sensors require two-conductor wire and some require three- or four-conductor wire.
5. Minimum wire size for 24 VAC thermostat wiring should be 22-gauge.
6. Be sure all wiring connections are properly inserted and tightened into the terminal blocks. Do not allow wire strands to stick out and touch adjoining terminals which could potentially cause a short circuit.
7. When communication wiring is used to interconnect AAON unit controllers together or to connect to other communication devices, all wiring must be plenum-rated, minimum 18-gauge, two-conductor, twisted pair with shield. AAON can supply communication wire that meets this specification and is color coded for the network or local loop. Please consult your AAON distributor for information. If desired, Belden #82760 or equivalent wire may also be used.
8. Before applying power to the AAON unit controller, RSM-DEV1 Modules, and any associated modules, be sure to recheck all wiring connections and terminations thoroughly.

Powering Up

When the controller and modules are first powered up, the POWER LED should light up and stay on continuously. If it does not light up, check to be sure the 24 VAC is connected to the controller, that the wiring connections are tight, and they are wired for the correct polarity. The 24 VAC power must be connected so all ground wires remain common. If after making all these checks, the POWER LED does not light up, please contact AAON Controls Support for assistance.

Support is available Monday through Friday
7:00 A.M. to 5:00 P.M., Central Time.
1-866-918-1100 | 1-918-382-6450
controls.support@aaon.com

INSTALLATION

Dimensions

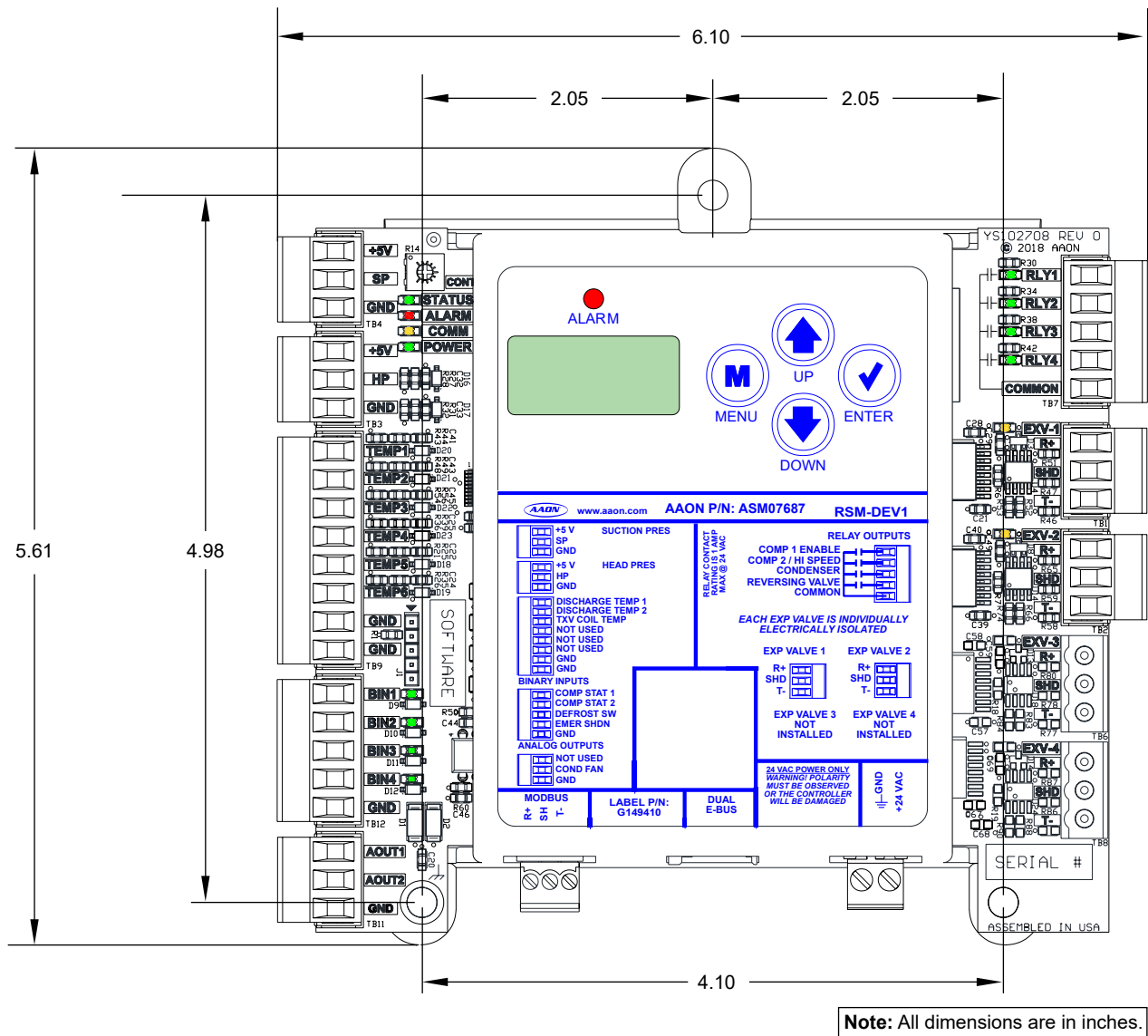


Figure 1: RSM-DEV1 Dimensions

INSTALLATION

Wiring

Inputs Wiring

The RSM-DEV1 uses an E-BUS cable to connect to the VCCX2 Controller. Up to four RSM-DEV1 Modules can be connected. Two E-BUS expansion ports allow connection to the VCCX2 Controller, communicating sensors, and other E-BUS modules.

The RSM-DEV1 uses five analog inputs, four binary inputs, four relays, and one analog output. See **Figure 3, this page**, for inputs wiring and **Figure 4, page 10**, for outputs wiring.

Head Pressure Control

The RSM-DEV1 can monitor the Head Pressure Transducers and control condenser fans to maintain a Head Pressure Setpoint. The condenser fans will be controlled with a 0-10 VDC output signal.

WARNING! Observe polarity! All boards must be wired with GND-to-GND and 24 VAC-to-24 VAC. Failure to observe polarity will result in damage to one or more of the boards. Expansion modules must be wired so the expansion modules and the controller are always powered together. Loss of power to the expansion module will cause the controller to become inoperative until power is restored to the expansion module.

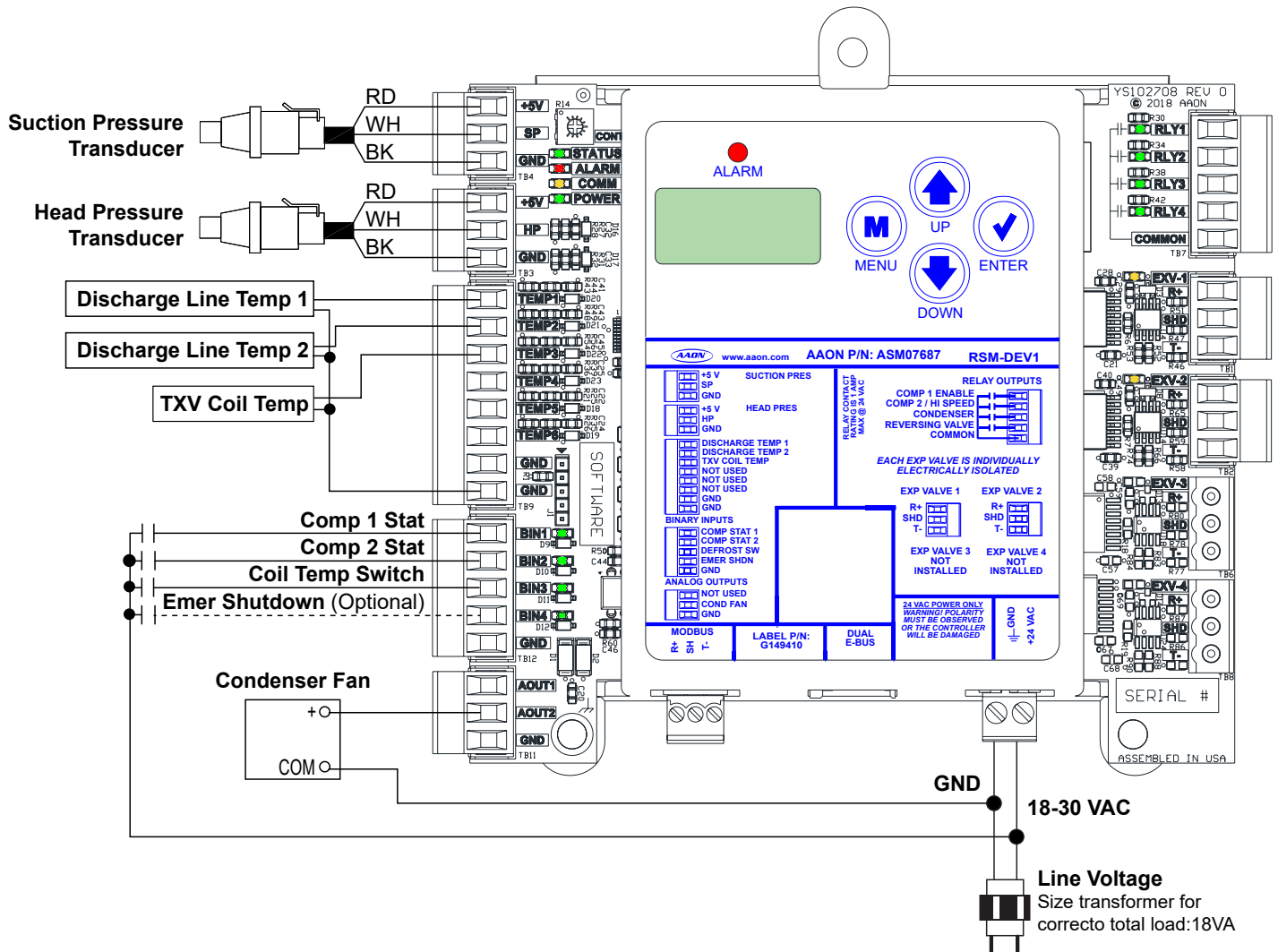


Figure 2: RSM-DEV1 Inputs Wiring

INSTALLATION

Wiring

Outputs Wiring

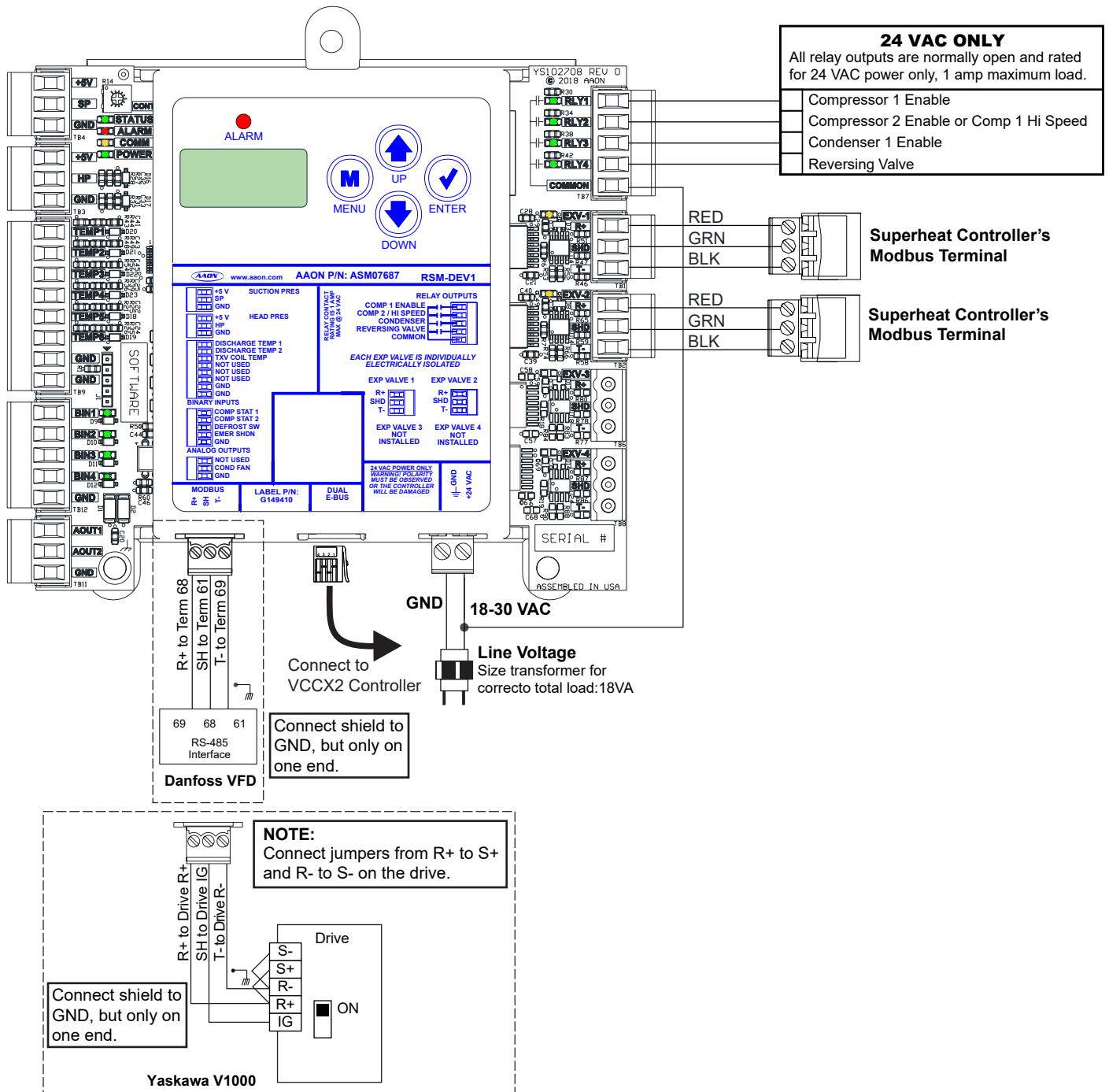


Figure 3: RSM-DEV1 Outputs Wiring

INSTALLATION

Inputs and Outputs

Inputs/Outputs Map

See Table 2, this page, for the RSM-DEV1 inputs and outputs.

RSM-DEV1 INPUTS AND OUTPUTS	
Analog Inputs	
SP	Suction Pressure Transducer
HP	Head Pressure Transducer
TEMP1	Discharge Line Temperature 1
TEMP2	Discharge Line Temperature 2
TEMP3	TXV Coil Temperature
TEMP4	Not used
TEMP5	Not used
TEMP6	Not used
Binary Inputs	
BIN1	Compressor 1 status
BIN	Compressor 2 status
BIN3	Coil Temperature Switch
BIN4	Emergency shutdown (optional)
Analog Outputs (0-10 VDC)	
AOUT1	Not used
AOUT2	Condenser Fan 1
EXV COMM Ports	
EXV-1	EXV Controller 1
EXV-2	EXV Controller 2
EXV-3	Not used
EXV-4	Not used
Binary Outputs (24 VAC)	
RLY1	Compressor 1 enable
RLY2	Compressor 2 enable or Compressor 1 high speed enable
RLY3	Condenser 1 enable
RLY4	Reversing Controller's Valve
Communication Terminals	
DUAL E-BUS	E-BUS communication loop ports
MODBUS	VFD compressor

Table 2: RSM-DEV1 Inputs and Outputs

Inputs and Outputs

Descriptions

+5 - VDC Power

This output is a 5 VDC output that supplies power to the Suction or Head Pressure Transducer.

SP - Suction Pressure Transducer

The Suction Pressure Transducer is used on modules that do not have VFD compressors wired to them. Units have three options to obtain suction pressure/saturation temperature/superheat.

1. Through MODBUS communications to DMQ EXV superheat controller.
2. Through MODBUS communications to Sporlan S3C EXV superheat controller.
3. From onboard sensors; suction pressure, coil temperature sensors

HP - Head Pressure Transducer

The Head Pressure Transducer is used to measure head pressure at the discharge line. This head pressure is used to drive condenser fan to maintain a given head pressure setpoint.

TEMP1 - Discharge Line Temperature 1

This sensor is the Discharge Line Temperature Sensor for Circuit 1. It is strapped to the discharge line immediately after the VFD compressor and is used as a safety against high compressor temperatures.

TEMP2 - Discharge Line Temperature 2

This sensor is the Discharge Line Temperature Sensor for Circuit 2. It is required on all ASHP and WSHP with a second compressor on module.

TEMP3 - TXV Coil Temperature

If the unit does not have a communicating EXV/superheat controller, then the coil temperature sensor is wired to this input to calculate superheat.

BIN1 - Compressor 1 Status

A wet contact closure (24 VAC) on this input indicates Compressor 1 is running. Typically, the source for this is a relay output from the auxiliary contact on the compressor contactor. If BIN1 opens, Compressor 1 Enable Relay de-energizes and a compressor alarm is generated.

If Compressor 1 on module is a VFD, then compressor status is validated through VFD communications and wiring to this input is not necessary.

BIN2 - Compressor 2 Status

A wet contact closure (24 VAC) on this input indicates Compressor 2 is running. Typically, the source for this is a relay output from the auxiliary contact on the compressor contactor. If BIN2 opens, Compressor 2 Enable Relay de-energizes and a compressor alarm is generated.

NOTE: The binary inputs require wet contacts (24 VAC only) to recognize an active input. Contact closure will not be recognized if dry contacts are used.

BIN3 - Coil Temperature Switch

A wet contact closure (24 VAC) on this input indicates the condenser coil is frozen or has frost build-up and a defrost is needed.

BIN4 - Emergency Shutdown Contact

If configured, when this wet contact input is open, the RSM operation is disabled.

AOUT2 - Condenser Fan VFD Signal

This is a direct acting output signal that is used to modulate the Condenser Fan VFD (0-10 VDC signal) on an air cooled unit.

EXV-1 - EXV Controller 1

The EXV-1 is the MODBUS port for EXV Controller 1's setpoints and status communications.

EXV-2 - EXV Controller2

The EXV-2 is the MODBUS port for EXV Controller 2's setpoints and status communications.

RLY1 - Compressor 1 Enable

This relay turns on Compressor 1.

RLY2 - Compressor 2 Enable / Compressor 1 High Speed Enable

This enables Compressor 2 when there are tandem compressors. If Compressor 1 is a two-step compressor, this relay enables high speed.

RLY3 - Condenser 1 Enable

This relay enables Condenser Fan 1.

RLY4 - Reversing Valve Enable

This relay enables the reversing valve.

SEQUENCE OF OPERATIONS

Modes of Operation

Cooling and Heating Modes

Staging of the compressors is determined by the Supply Air Temperature setpoint not being satisfied. Staging is met by turning the VFD compressors and on/off compressor on or off, or the two-step compressor to low speed (two-thirds, 67%, capacity) or to high speed (full, 100%, capacity).

During Cooling Mode, the VFD compressor modulation is determined from Saturation Temperature. During Heating Mode, the VFD compressor modulation is determined from Supply Air Temperature.

Compressor envelope and/or electrical current protections also affect the VFD compressor modulation by limiting minimum and maximum RPM speed.

Dehumidification Operation

Dehumidification Mode control staging and VFD modulation is determined using the Saturation Temperature from each circuit. Circuit 1 uses Superheat Controller Saturation Temperature and Circuit 2 uses the Saturation Coil Temperature Sensor (TEMP3 input) mounted after the TXV.

NOTE: Compressor 2 cannot be turned off in Dehumidification Mode unless it shuts down because of an alarm fault (see **Table 9 Alarms Screens**).

SEQUENCE OF OPERATIONS

Staging

Stage Types

The RSM-DEV1 uses different staging sequences depending on the unit configuration. Below are the different stage types the module can use.

Please see **Table 6: Module Screens, Stage ID, page 24.**

- Stage Type 1 - Single VFD compressor
- Stage Type 2 - VFD compressor plus on/off compressor
- Stage Type 3 - VFD compressor plus two-step compressor
- Stage Type 4 - VFD compressor plus tandem on/off compressors
- Stage Type 5 - Tandem VFD compressors with on/off compressor plus tandem on/off compressors
- Stage Type 6 - Four Circuit: VFD compressor, on/off compressor, VFD compressor, and on/off compressor

Stage Type 1 - Single VFD

Units affected

- RQ 2-6 Ton
- RNA 7 Ton
- RNA 8 Ton
- RNA 10 Ton
- RNC 16 Ton

Modules

- Module 1(A): VFD

Stages for all modes

- Stage 0: VFD is off
- Stage 1: VFD is on

Cooling, Heating, and regular Dehumidification Mode

Stage 0 to 1 (VFD stages on)

- No stage delay.
- Minimum off time has been met.
- Controlling temperature is above the staging window for cooling and below the staging window for heating.
- VFD turns on at recommended start speed (3,600 RPM Copeland, 3,000 RPM Danfoss).
- If Dehumidification Mode, VFD turns on immediately. No conditions needed.

Stage 1 to 0 (VFD stages off)

- VFD was at minimum speed.
- VFD minimum run time met.
- Stage delay has been met.
- Controlling temperature is below the staging window for cooling or above the staging window for heating.
- If Dehumidification Mode, VFD is not allowed to stage off.

Stage Type 2 - VFD Plus On/Off

Units affected

- RNC 30 Ton

Modules

- Module 1(A): VFD
- Module 2(B): on/off

Stages for all modes

- Stage 0: All are off
- Stage 1: VFD is on; on/off is off
- Stage 2: VFD is off; on/off is on
- Stage 3: All are on

Units with reheat on the second circuit have a different method of staging for dehumidification.

Cooling, Heating, and regular Dehumidification Mode

Stage 0 to 1 (VFD stages on; on/off is off)

- No stage delay.
- Minimum off time has been met.
- Controlling temperature is above the staging window for cooling or below the staging window for heating.
- VFD turns on at recommended start speed (3,600 RPM Copeland; 3,000 RPM Danfoss).
- If Dehumidification Mode, VFD turns on immediately. No conditions needed.

Stage 1 to 3 (VFD is on; On/Off stages on)

- VFD was at maximum speed.
- Stage delay has been met.
- Controlling temperature is above the staging window for cooling or below the staging window for heating.
- VFD resets to recommended start speed (3,600 RPM Copeland; 3,000 RPM Danfoss).

Stage 3 to 1 (VFD is on; on/off stages off)

- VFD was at minimum speed.
- Stage delay has been met.
- Controlling temperature is below the staging window for cooling or above the staging window for heating.
- VFD resets to recommended start speed (3,600 RPM Copeland; 3,000 RPM Danfoss).

Stage 1 to 0 (All stage off)

- VFD was at minimum speed.
- VFD minimum run time has been met.
- Stage delay has been met.
- Controlling temperature is below the staging window for cooling or above the staging window for heating.
- If Dehumidification Mode, VFD is not allowed to stage off.

SEQUENCE OF OPERATIONS

Staging

Reheat only on second circuit in Dehumidification Mode

Stage 2 (VFD is off; on/off is on in Dehumidification Mode only)

- On/Off is on immediately, no conditions needed.

Stage 2 to 3 (VFD stages on; on/off is on)

- Stage delay has been met.
- Controlling temperature is above the staging window for cooling or below the staging window for heating.

Stage 3 to 2 (VFD stages off; on/off is on in Dehumidification Mode only)

- Stage delay has been met.
- Controlling temperature is below the staging window for cooling or above the staging window for heating.
- On/off is not allowed to stage off in Dehumidification Mode.

Transitioning

To Dehumidification Mode

- Stage 1 is not a valid dehumidification stage.
- If in stage 1, go directly to stage 2.

To Cool/Heat Mode

- Stage 2 is not valid cool/heat stage.
- If in stage 2, go directly to stage 3.

Stage Type 3 - VFD Plus Two-Step

Units affected

- RNB 9 Ton
- RNB 11 Ton
- RNB 13 Ton
- RNB 15 Ton
- RNC 20 Ton
- RNC 25 Ton
- RND 26 Ton

Modules

- Module 1(A): VFD
- Module 2(B):
 - Two-step low speed (67% capacity) (B1)
 - Two-step high speed (100% capacity) (B2)

Stages for all modes

- Stage 0: All off
- Stage 1: VFD is on; two-step is off
- Stage 2: VFD is off; two-step is on at low speed
- Stage 3: VFD is off; two-step is on at high speed
- Stage 4: VFD is on; two-step is on at low speed
- Stage 5: VFD is on; two-step is on at high speed

Cooling, Heating, and regular Dehumidification Mode

Stage 0 to 1 (VFD stages on; two-step is off)

- No stage delay.
- Minimum off time has been met.
- Controlling temperature is above the staging window for cooling or below the staging window for heating.
- VFD turns on at recommended start speed (3,600 RPM Copeland; 3,000 RPM Danfoss).

Stage 1 to 4 (VFD is on; two-step stages on at high speed then can transition to low speed)

- VFD was at maximum speed.
- Stage delay has been met.
- Supply Air temperature is above the staging window for cooling or below the staging window for heating.
- In Cooling and Dehumidification mode, when Saturation Temperature drops one deadband below Coil setpoint, the two-step compressor transitions to 67%.
- In Heating mode, when Supply Air Temperature rises one deadband above Supply Air the two-step compressor transitions to 67%.
- Minimum run time must also be satisfied before the two-step stages down.
- VFD resets to recommended start speed (3,600 RPM Copeland; 3,000 RPM Danfoss).

Stage 4 to 5 (VFD is on; two-step transitions from low speed to high speed)

- Set two-step to high speed if flush cycle is active.
- Set two-step to high speed if VFD is at maximum speed and controlling temperature is above the staging window for cooling or below the staging window for heating.
- Set two-step to high speed if reheat valve is 100% and supply air temperature is at least two degrees below setpoint.
- Stage delay has been met.

Stage 5 to 4 (VFD is on; two-step transitions from high speed to low speed)

- VFD was at minimum speed.
- Stage delay has been met.
- Controlling temperature is below the staging window for cooling or above the staging window for heating.
- In Cooling and Dehumidification mode, when Saturation Temperature drops one deadband below Coil setpoint, the two-step compressor transitions to 67%.
- In Heating mode, when Supply Air Temperature rises one deadband above Supply Air the two-step compressor transitions to 67%.
- Minimum run time must also be satisfied before two-step stages down.
- VFD resets to recommended start speed (3,600 RPM Copeland; 3,000 RPM Danfoss).

SEQUENCE OF OPERATIONS

Staging

Stage 4 to 1 (VFD is on; Two-Step stages off)

- VFD was at minimum speed.
- Stage delay has been met.
- Controlling temperature is below the staging window for cooling or above the staging window for heating.
- VFD resets to recommended start speed (3,600 RPM Copeland; 3,000 RPM Danfoss).

Stage 1 to 0 (VFD stages off; two-step is off)

- VFD was at minimum speed.
- VFD minimum run time met.
- Stage delay has been met.
- Controlling temperature is below the staging window for cooling or above the staging window for heating.
- If Dehumidification Mode, VFD is not allowed to stage off.

Reheat only on second circuit in Dehumidification Mode

Stage 2 (VFD is off; two-step stages on at low speed)

- Two-Step on immediately, no conditions needed.

Stage 2 to 3 (VFD is off; two-step transitions to high speed)

- Set Two-Step to high speed if flush cycle is active. This may make system go to stage 3 quickly if starting flush is enabled.
- Set two-step to high speed if cooling or heating controlling temperature is above the staging window for cooling or below the staging window for heating.
- Set two-step to high speed if reheat valve is 100% and supply air temperature is at least two degrees below setpoint.

Stage 3 to 5 (VFD stages on; two-step remains at high speed)

- Stage delay has been met.
- Controlling temperature is above the staging window for cooling or below the staging window for heating.

Stage 5 to 4 (VFD is on; two-step transitions to low speed)

- If VFD is 50% or less and reheat valve is 50% or less, VFD resets to recommended start speed (3,600 RPM Copeland; 3,000 RPM Danfoss).

Stage 4 to 3 (VFD stages off; two-step transitions to high speed)

Stage 5 to 3 (VFD stages off; two-step is on at high speed)

- VFD was at minimum speed.
- Stage delay has been met.
- Controlling temperature is below the staging window for cooling or above the staging window for heating.

Stage 3 to 2 (VFD is off; two-step transitions to low speed)

- Stage delay has been met
- Controlling temperature is below the staging window for cooling or above the staging window for heating.
- Two-Step not allowed to stage off in Dehumidification Mode

Transitioning

To Dehumidification Mode

- Stage 1 is not a valid dehumidification stage
- If in stage 1, go directly to stage 2

To Cool/Heat Mode

- Stages 2 and 3 are not valid cool/heat stages
- If in stage 2 or 3, go directly to stage 4

Stage Type 4 - VFD Plus Tandem On/Off

Units affected

- RND 31 Ton

Modules

- Module 1(A): VFD
- Module 2(B):
On/Off (B1)
On/Off (B2)

Stages for all modes

- Stage 0: All are off
- Stage 1: VFD is on; B1 and B2 are off
- Stage 2: VFD and B2 are off; B1 is on
- Stage 3: VFD is off; B1 and B2 are on
- Stage 4: VFD and B1 are on; B2 is off
- Stage 5: All are on

Cooling, Heating, and regular Dehumidification Mode

Stage 0 to 1 (VFD stages on; B1 and B2 are off)

- No stage delay.
- Minimum off time has been met.
- Controlling temperature is above the staging window for cooling or below the staging window for heating.
- VFD turns on at recommended start speed (3,600 RPM Copeland; 3,000 RPM Danfoss).
- Dehumidification Mode, VFD turns on immediately. No conditions needed.

Stage 1 to 4 (VFD is on; B1 stages on; B2 is off)

- VFD was at maximum speed.
- Stage delay has been met.
- Controlling temperature is above the staging window for cooling or below the staging window for heating.
- VFD resets to recommended start speed (3,600 RPM Copeland; 3,000 RPM Danfoss).

Stage 4 to 5 (VFD and B1 are on; B2 stages on)

- VFD was at maximum speed.
- Stage delay has been met.
- Controlling temperature is above the staging window for cooling or below the staging window for heating.
- VFD resets to recommended start speed (3,600 RPM Copeland; 3,000 RPM Danfoss).

SEQUENCE OF OPERATIONS

Staging

Stage 5 to 4 (VFD and B1 are on; B2 stages off)

- VFD was at minimum speed.
- Stage delay has been met.
- Controlling temperature is below the staging window for cooling or above the staging window for heating.
- VFD resets to recommended start speed (3,600 RPM Copeland; 3,000 RPM Danfoss).

Stage 4 to 1 (VFD is on; B1 stages off; B2 is off)

- VFD was at minimum speed.
- Stage delay has been met.
- Controlling temperature is below the staging window for cooling or above the staging window for heating.
- VFD resets to recommended start speed (3,600 RPM Copeland; 3,000 RPM Danfoss).

Stage 1 to 0 (VFD stages off; B1 and B2 are off)

- VFD was at minimum speed.
- VFD minimum run time has been met.
- Stage delay has been met.
- Controlling temperature is below the staging window for cooling or above the staging window for heating.
- If Dehumidification Mode, VFD is not allowed to stage off.

Reheat only on second circuit in Dehumidification Mode

Stage 2 (VFD and B2 are off; B1 is on)

- B1 on immediately, no conditions needed.

Stage 2 to 3 (VFD is off; B1 is on; B2 stages on)

- Stage delay has been met.
- Controlling temperature is above the staging window for cooling or below the staging window for heating.
- Or, reheat valve at maximum and supply air temperature at least two degrees below setpoint.

Stage 3 to 5 (VFD stages on; B1 and B2 are on)

- Stage delay has been met.
- Controlling temperature is above the staging window for cooling or below the staging window for heating.

Stage 5 to 4 (VFD and B1 are on; B2 stages off)

- VFD is less than or equal to 50% and reheat valve is less than or equal to 50%.
- VFD resets to recommended start speed (3,600 RPM Copeland; 3,000 RPM Danfoss).

Stage 5 to 3 (VFD stages off; B1 and B2 are on)

Stage 4 to 3 (VFD stages off; B1 is on; B2 stages on)

- VFD was at minimum speed.
- Controlling temperature is below the staging window for cooling or above the staging window for heating.
- Stage delay has been met.

Stage 3 to 2 (VFD is off; B1 is on; B2 stages off)

- Stage delay has been met.
- Controlling temperature is below the staging window for cooling or above the staging window for heating.
- VFD is not allowed to stage off in Dehumidification Mode

Transitioning

To Dehumidification Mode

- Stage 1 is not a valid dehumidification stage.
- If in stage 1, go directly to stage 2.

To Cool/Heat Mode

- Stage 2 (or 3) is not valid cool/heat stage.
- If in stage 2 (or 3), go directly to stage 4.

Stage Type 5 - Tandem VFD with On/Off Plus Tandem On/Off

Units affected

- RND 40-70 Ton

Modules

- Module 1(A):
 - VFD (A1)
 - On/off (A2)
- Module 2(B):
 - On/off (B1)
 - On/off (B2)

Stages for all modes

- Stage 0: All are off
- Stage 1: A1 is on; A2, B1, and B2 are off
- Stage 2: A1, A2, and B2 are off; B1 is on
- Stage 3: A1 and A2 are off; B1 and B2 are on
- Stage 4: A1 and B1 are on; A2 and B2 are off
- Stage 5: A1, A2, and B1 are on; B2 is off
- Stage 6: A1, B1, and B2 are on; A2 is off
- Stage 7: All are on

Cooling, Heating, and regular Dehumidification Mode (reheat on circuit 1 or both)

Stage 0 to 1 (A1 stages on; A2, B1, and B2 are off)

- No stage delay.
- Minimum off time has been met.
- Controlling temperature is above the staging window for cooling or below the staging window for heating.
- A1 turns on at recommended start speed (3,600 RPM Copeland; 3,000 RPM Danfoss).
- For Dehumidification Mode, A1 turns on immediately. No conditions needed.

SEQUENCE OF OPERATIONS

Staging

Stage 1 to 4 (A1 is on; B1 stages on; A2 and B2 are off)

- A1 was at maximum speed.
- Stage delay has been met.
- Controlling temperature is above the staging window for cooling or below the staging window for heating.
- A1 resets to recommended start speed (3,600 RPM Copeland; 3,000 RPM Danfoss).

Stage 4 to 5 (A1 and B1 are on; A2 stages on; B2 is off)

- A1 was at maximum speed.
- Stage delay has been met.
- Controlling temperature is above the staging window for cooling or below the staging window for heating.
- A1 resets to recommended start speed (3,600 RPM Copeland; 3,000 RPM Danfoss).

Stage 5 to 7 (A1, A2, and B1 are on; B2 stages on)

- A1 was at maximum speed.
- Stage delay has been met.
- Controlling temperature is above the staging window for cooling or below the staging window for heating.
- A1 resets to recommended start speed (3,600 RPM Copeland; 3,000 RPM Danfoss).

Stage 7 to 5 (A1, A2, and B1 are on; B2 stages off)

- A1 was at minimum speed.
- Stage delay has been met.
- Controlling temperature is below the staging window for cooling or above the staging window for heating.
- A1 resets to recommended start speed (3,600 RPM Copeland; 3,000 RPM Danfoss).

Stage 5 to 4 (A1 and B1 are on; A2 stages off; B2 is off)

- A1 was at minimum speed.
- Stage delay has been met.
- Controlling temperature is below the staging window for cooling or above the staging window for heating.
- A1 resets to recommended start speed (3,600 RPM Copeland; 3,000 RPM Danfoss).

Stage 4 to 1 (A1 is on; B1 stages off; A2 and B2 are off)

- A1 was at minimum speed.
- Controlling temperature is below the staging window for cooling or above the staging window for heating.
- A1 resets at recommended start speed (3,600 RPM Copeland; 3,000 RPM Danfoss).

Stage 1 to 0 (A1 stages off; A2, B1, and B2 are off)

- A1 was at minimum speed.
- A1 minimum run time met.
- Stage delay has been met.
- Controlling temperature is below the staging window for cooling or above the staging window for heating.
- If in Dehumidification Mode, A1 is not allowed to stage off.

Reheat only on second circuit in Dehumidification Mode

Stage 2 (A1, A2, and B2 are off; B1 is on)

- B1 on immediately, no conditions needed.

Stage 2 to 3 (A1 and A2 are off; B1 is on; B2 stages on)

- Stage delay has been met.
- Controlling temperature is above the staging window for cooling or below the staging window for heating.
- Or, reheat valve at 100% and supply air temperature is at least two degrees below setpoint.

Stage 3 to 6 (A1 stages on; A2 is off; B1 and B2 are on)

- Stage delay has been met.
- Controlling temperature is above the staging window for cooling or below the staging window for heating.

Stage 6 to 7 (A1, B1, and B2 are on; A2 stages on)

- Stage delay has been met.
- Controlling temperature is above the staging window for cooling or below the staging window for heating.

Stage 7 to 6 (A1, B1, and B2 are on; A2 stages off)

- Stage delay has been met.
- Controlling temperature is below the staging window for cooling or above the staging window for heating.

Stage 6 to 4 (A1 and B1 are on; A2 is off; B2 stages off)

- Stage delay has been met.
- A1 is less than or equal to 50% and reheat valve less than or equal to 50%.
- A1 resets to recommended start speed (3,600 RPM Copeland; 3,000 RPM Danfoss).

Stage 6 to 3 (A1 stages off; A2 is off; B1 and B2 are on)

Stage 4 to 3: (A1 and B1 are on; A2 is off; B2 stages on)

- A1 is at minimum speed.
- Controlling temperature is below the staging window for cooling or above the staging window for heating.
- Stage delay has been met.

SEQUENCE OF OPERATIONS

Staging

Stage 3 to 2 (A1 and A2 are off; B1 is on; B2 stages off)

- Stage delay has been met.
- Controlling temperature is below the staging window for cooling or above the staging window for heating.
- B1 not allowed to stage off in Dehumidification Mode.

Transitioning

To Dehumidification Mode

- Stage 1 is not a valid dehumidification stage.
- If in stage 1, go directly to stage 2.

To Cool/Heat Mode

- Stage 2 is not valid cool/heat stage.
- If in stage 2, go directly to stage 3.

Stage Type 6 - Four Circuit: VFD, On/Off, VFD, On/Off

Units affected

- RND 50 Ton
- RND 60 Ton

Modules

- Module 1(A): VFD (A1)
- Module 2(B): On/off (B1)
- Module 3(C): VFD (C1)
- Module 4(D): On/off (D1)

Stages for all modes

- Stage 0: All are off
- Stage 1: A1 and C1 are on; B1 and D1 are off
- Stage 2: B1 and D1 are on; A1 and C1 are off
- Stage 3: A1, C1, and B1 are on; D1 is off
- Stage 4: A1, B1, and D1 are on; C1 is off
- Stage 5: All are on

Cooling, Heating, and regular Dehumidification Modes (reheat on primary circuits only or on all)

Stage 0 to 1 (A1 and C1 stage on; B1 and D1 are off)

- No stage delay.
- Minimum off time has been met.
- Controlling temperature is above the staging window for cooling or below the staging window for heating.
- A1 and C1 turn on at recommended start speed (3,600 RPM Copeland).
- Dehumidification Mode, A1 and C1 turn on immediately. No conditions needed.

Stage 1 to 3 (A1 and C1 are on; B1 stages on; D1 is off)

- A1 and C1 at maximum speed.
- Stage delay has been met.
- Controlling temperature is above the staging window for cooling or below the staging window for heating.

- A1 and C1 reset to recommended start speed (3,600 RPM Copeland).
- B1 turns on.

Stage 3 to 5 (A1, C1, and B1 are on; D1 stages on)

- A1 and C1 at maximum speed.
- Stage delay has been met.
- Controlling temperature is above the staging window for cooling or below the staging window for heating.
- A1 resets to recommended start speed (3,600 RPM Copeland).
- C1 resets to recommended start speed (3,600 RPM Copeland).
- D1 turns on.

Stage 5 to 3 (A1, B1, and C1 are on; D1 stages off)

- A1 and C1 at minimum speed.
- Stage delay has been met.
- Controlling temperature is belows the staging window for cooling or above the staging window for heating.
- A1 resets to recommended start speed (3,600 RPM Copeland).
- B1 turns on at recommended start speed (3,600 RPM Copeland).
- D1 turns off.

Stage 3 to 1 (A1 and C1 are on; B1 stages off; D1 is off)

- A1 and C1 at minimum speed.
- Controlling temperature is below the staging window for cooling or above the staging window for heating.
- A1 and C1 reset to recommended start speed (3,600 RPM Copeland).
- B1 turns off.

Stage 1 to 0 (A1 and C1 stage off; B1 and D1 are off)

- A1 and C1 at minimum speed.
- B1 minimum run time met.
- Stage delay met.
- Controlling temperature is below the staging window for cooling or above the staging window for heating.
- If Dehumidification Mode, A1 and C1 are not allowed to stage off.

Reheat only on second circuit in Dehumidification Mode

Stage 2 (B1 and D1 are on; A1 and C1 are off)

- B1 and D1 are on immediately; no conditions needed.

Stage 2 to 4 (A1 stages on, B1 and D1 are on, C1 is off)

- Stage delay has been met.
- Controlling temperature is above the staging window for cooling or below the staging window for heating.
- A1 turns on at recommended start speed (3,600 RPM Copeland).

SEQUENCE OF OPERATIONS

Staging

Stage 4 to 5 (A1, B1, and D1 are on; C1 stages on)

- Stage delay has been met.
- Controlling temperature is above the staging window for cooling or below the staging window for heating.
- A1 resets to recommended start speed (3,600 RPM Copeland).
- C1 turns on at recommended start speed (3,600 RPM Copeland).

Stage 5 to 4 (A1, B1, and D1 are on; C1 stages off)

- Stage delay has been met.
- Controlling temperature is below the staging window for cooling or above the staging window for heating.
- A1 resets to recommended start speed (3,600 RPM Copeland, 3,000 RPM Danfoss).
- C1 off.

Stage 4 to 2 (A1 stages off; B1 and D1 are on; C1 is off)

- A1 is at minimum speed.
- Controlling temperature is below the staging window for cooling or above the staging window for heating.
- Stage delay has been met.

Transitioning

To Dehumidification Mode

- Stage 1 is not a valid dehumidification stage. If in stage 1, go directly to stage 2
- Stage 3 is not a valid dehumidification stage. If in stage 3, go directly to stage 5

To Cool/Heat Mode

- Stage 2 is not a valid cool/heat stage. If in stage 2, go directly to 3.
- Stage 4 is not a valid cool/heat stage. If in stage 4, go directly to stage 5

SEQUENCE OF OPERATIONS

Envelope Protection

Envelope Protection

Compressor manufacturer specifications require the compressor to operate within its given operating envelope to maintain the life and longevity of the compressor. Some envelopes also have areas within that limit the minimum/maximum operating speeds. Min/max speeds may also be limited based on the requirements of the unit's total capacity. Prism 2 interface allows the ability to see real time envelope plotting while the compressor is running.

The minimum operating speed reference is read from the VFD and can change depending on where the compressor is operating within its envelope.

The VFD compressor is set to 67% at any stage event. Therefore, whenever a staging event occurs, the VFD compressor position is reset to the middle point of the modulation range. This allows the compressor enough modulation time before making another staging event to try to avoid cycling between staging events.

Figures 5-8, this page, are examples of compressor envelopes.

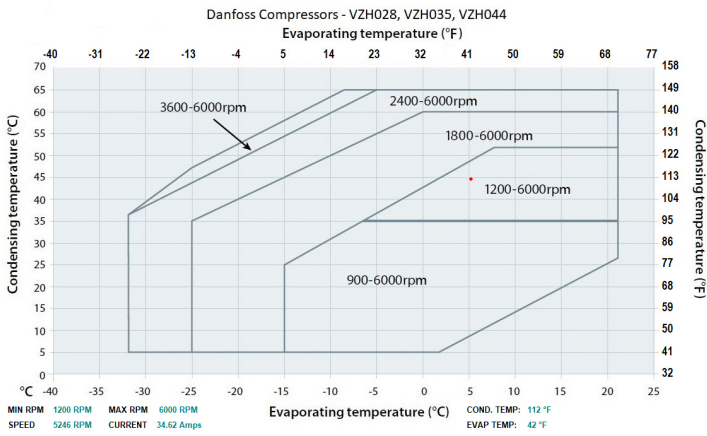


Figure 4: Danfoss VZH028, VZH035, VZH044 Envelope

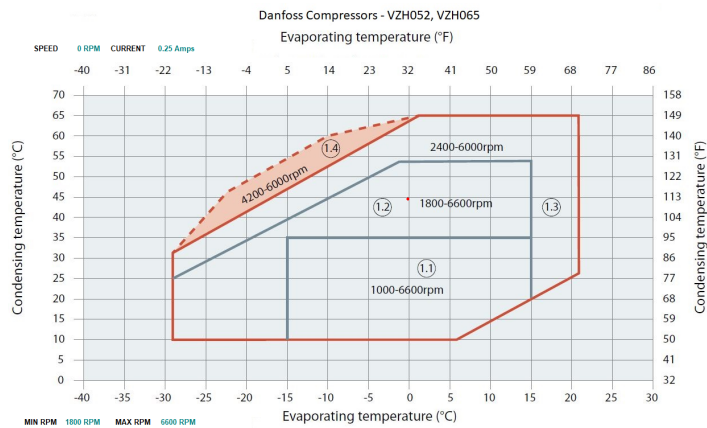


Figure 5: Danfoss VZH052 and VZH065 Envelope

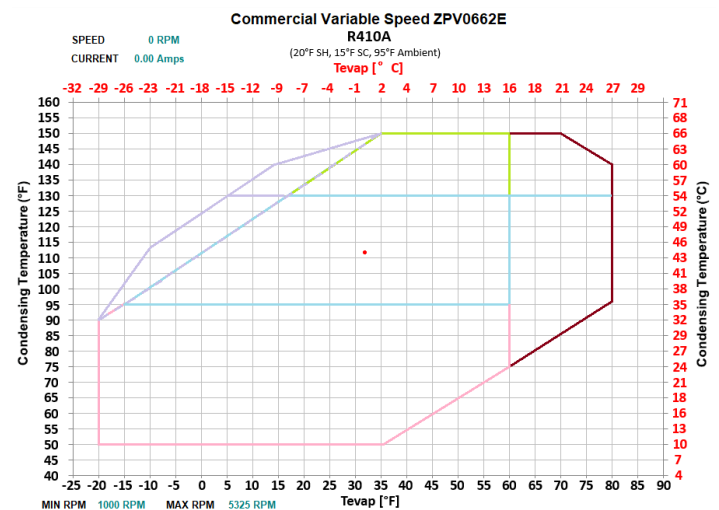


Figure 6: Copeland ZPV0662E Envelope

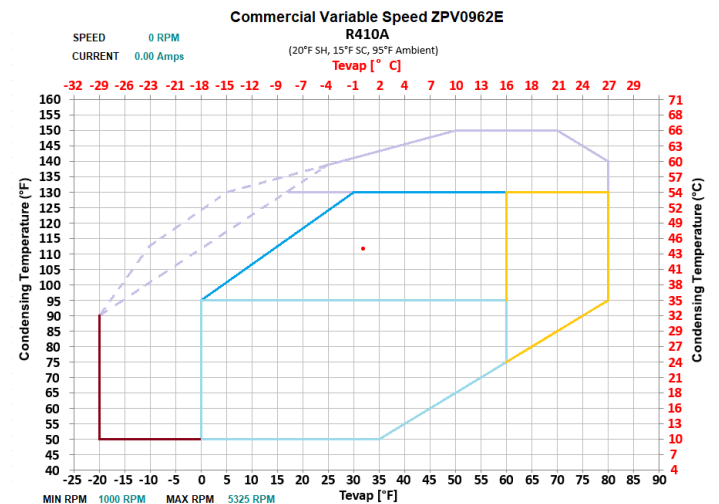


Figure 7: Copeland ZPV0962E Envelope

Component Operation

Electronic Expansion Valve Operation

EXV operation is fully integrated into the superheat controller. The superheat controller measures suction pressure and temperature to determine superheat and automatically modulates the EXV to maintain the configured superheat. The RSM-DEV1 communicates with the superheat controller to set the desired Superheat Setpoint and to retrieve operational data for display and trending purposes.

Head Pressure Control

The RSM-DEV1 can monitor a head pressure transducer and control a condenser fan to maintain a Head Pressure Setpoint.

The condenser fan starting speed varies based on outside air temperatures. At 40°F or colder the fan starts at 10%; at 70°F or warmer the fan starts at 100%. Starting speed adjusts linearly between 40 and 70 degrees.

In Cooling Mode, the condenser fan modulates speeds to target the discharge pressure setpoint based on the highest running circuit it is controlling. This is also true for Dehumidification Mode and has a separate discharge pressure setpoint adjustable in Prism 2.

In Heat Pump Heating, the outside fan modulates speeds to target the outside approach temperature setpoint which is outside temperature minus the lowest saturation temperature of the running circuit it is controlling.

If the pressure exceeds 575 psig, the circuit shuts down in an attempt to fail before the mechanical high pressure switch opens. The circuit is allowed to restart after five minutes.

If no head pressure is detected on a circuit, the compressor is disabled and not allowed to run. If the head pressure reading is lost while circuit is on, the condenser signal goes to 100% until the compressor shuts down.

LCD SCREENS

LCD Display Screen and Navigation Keys

The LCD display screens and buttons allow you to view status and alarms, and enable force modes. See **Figure 9, this page**, and refer to **Table 3 and Table 4, this page**, for key functions.

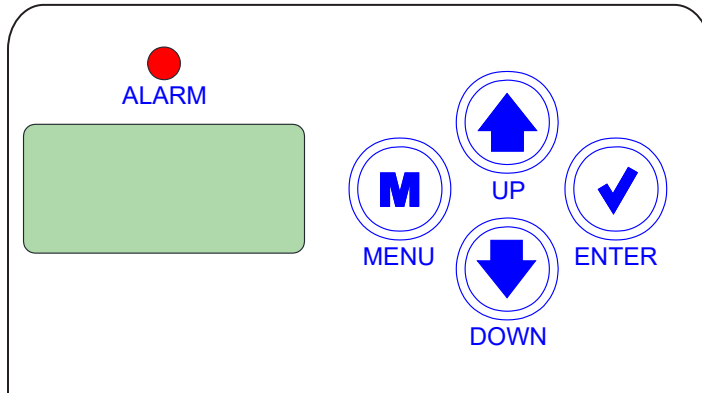


Figure 8: LCD Display and Navigation Keys

Navigation Key	Key Function
MENU 	Use the <MENU> key to move through screens within Main Menu categories and return to the Main Menu while at other screens.
UP 	Use this key to adjust setpoints and change configurations.
DOWN 	Use this key to adjust setpoints and change configurations.
ENTER 	Use the <ENTER> key to navigate through the Main Menu Screen categories.

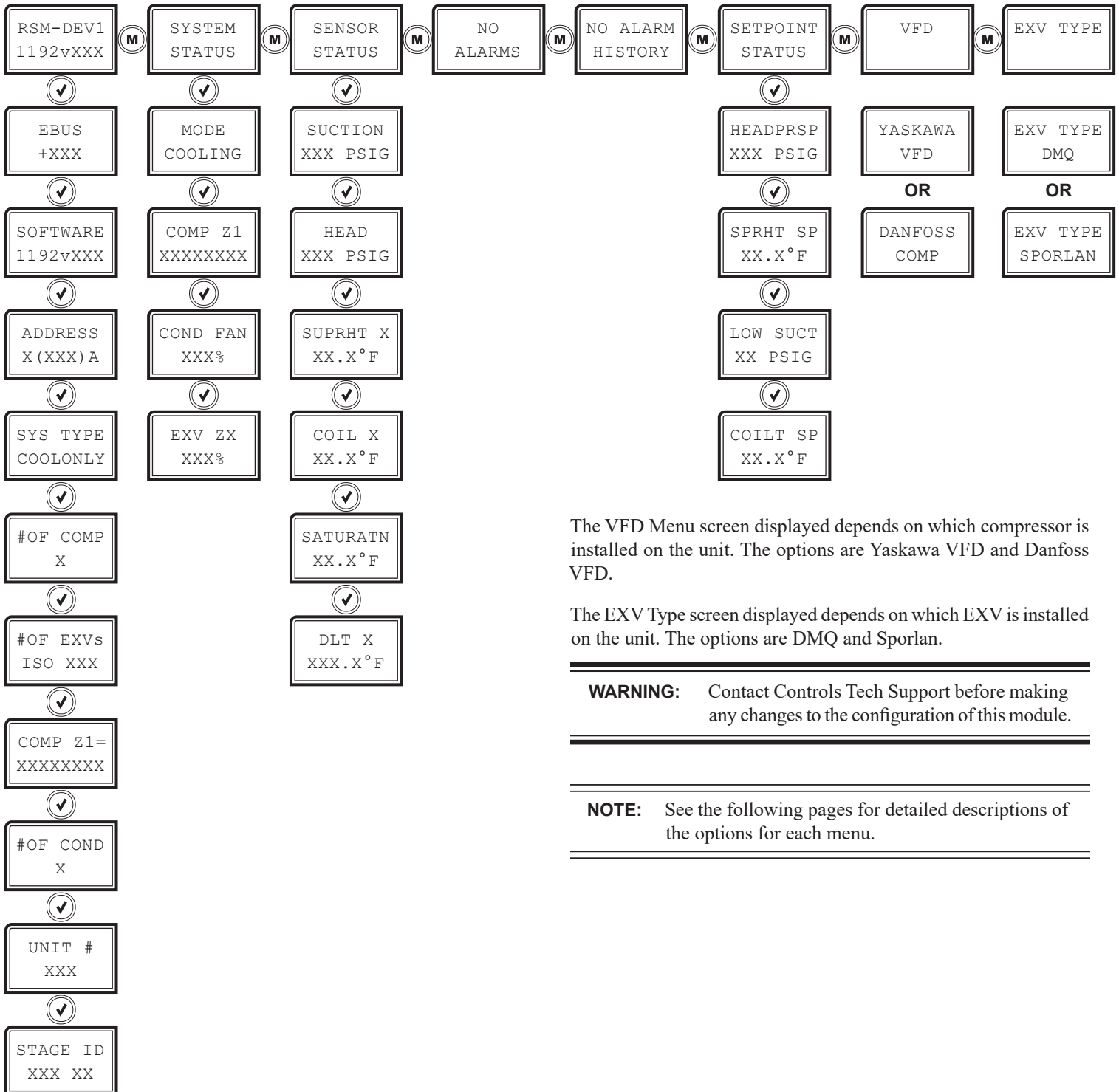
Table 3: Navigation Key Functions

Editing Key	Key Function
UP or DOWN 	Use the <UP> or <DOWN> key to enter Edit Mode on a user-adjustable screen. Edit Mode is indicated by the underscore appearing on the screen. NOTE: Entering Edit Mode will also adjust the value up one (<UP> key) or down one (<DOWN> key), so you may have to readjust the value.
ENTER 	Use the <ENTER> key to move through the digits in the screen when editing a numeric value. An extended press of the <ENTER> key saves your edits no matter the location of the editing cursor within the digits. Press the <ENTER> key to save a non-numeric value such as Hi Speed Network.
MENU 	The <MENU> key cancels editing when in Edit Mode. The screen you were editing will return to its original value and the underscore will disappear. A second press of the <MENU> key will return you to the Main Menu.

Table 4: Editing Key Functions

LCD SCREENS

Main Screens Map



The VFD Menu screen displayed depends on which compressor is installed on the unit. The options are Yaskawa VFD and Danfoss VFD.

The EXV Type screen displayed depends on which EXV is installed on the unit. The options are DMQ and Sporlan.

WARNING: Contact Controls Tech Support before making any changes to the configuration of this module.

NOTE: See the following pages for detailed descriptions of the options for each menu.

LCD SCREENS

Screen Descriptions

Main Screens

Refer to the following table when navigating through the LCD Main Screens.

Press the **<MENU>** button to navigate between the top level screens. Press the **<ENTER>** button to scroll through the next level screens,

MAIN SCREENS	
Screen Text	Description
RSM-DEV1 1192vXXX	Refrigeration module screens. The second line shows the software number and its version.
SYSTEM STATUS	System status screens
SENSOR STATUS	Sensor status screens
NO ALARMS	Alarm status screens. Screen shows NO ALARMS if no alarms are active.
NO ALARM HISTORY	Alarm history screens. Screen shows NO ALARM HISTORY if no alarms have been activated.
SETPOINT STATUS	Setpoint status screens
VFD MENU	VFD menu screens. There are two VFD menus possible. The one that appears depends on the unit's configuration. The options are: <ul style="list-style-type: none"> • DANFOSS • YASKAWA
EXV TYPE	Expansion valve type screens. There are two EXV TYPE menus possible. The one that appears depends on the unit's configuration. The options are: <ul style="list-style-type: none"> • DMQ • SPORLAN

Table 5: Main Screens

Module Screens

Refer to the following table when navigating through the module screens. From the RSM-DEV1 screen, press **<ENTER>** to scroll through the screens.

MODULE SCREENS	
Screen Text	Description
RSM-DEV1 1192vXXX	Refrigeration module screens. The second line shows the software number and its version.
EBUS +XXX	E-BUS communication. XXX equals the number of COMM packets received. The number increases as packets are received.
SOFTWARE 1192vXXX	Current software version. The second line shows the software number and its version. Access the protected screens from this screen by holding the <UP> button for five seconds.
ADDRESS X(XXX)Z	Current board address Board Address(E-BUS Address)Circuit Letter X equals the board address; (XXX) equals the E-BUS address; Z equals the circuit letter.
SYS TYPE COOLONLY	Current system type. Possible options for the second line are: <ul style="list-style-type: none"> • COOLONLY • HEATPUMP
#OF COMP X	The number of compressors configured. The X equals only 1 or 2, depending on how many compressors the system is configured for.
#OF EXVs ISO XXX	Number of expansion valves found. XXX equals 1 or 1&2
COMP Z1 XXXXXXXX	Configured compressor screens. The number of compressor menus depends on the unit's configuration. Z equals the circuit and can be A, B, C, or D. The second line shows the type of VFD or type of compressor if not a VFD. Possible options for the second line are: <ul style="list-style-type: none"> • YASK VFD (for a Yaskawa VFD) • DFOS 303 (Danfoss 303 VFD) • DFOS 803 (Danfoss 803 VFD) • FIXED • 2 STAGE • ERROR! (possible if the VCCX2 is not communicating to RSM)
#OF COND X	Number of condensers controlled by this module.
UNIT # XXX	Units numbered 1 through XXX. Shows which unit has been selected. Matches the unit # shown in Prism 2.
STAGE ID X X	Stage type and current stage number. The first number is the stage type number being used (1-6). The second number is the current stage that is active (0-7).

Table 6: Module Screens

LCD SCREENS

Screen Descriptions

System Status Screens

Refer to the following map when navigating through the System Status Screens. From the SYSTEM STATUS Screen, press <ENTER> to scroll through the screens.

SYSTEM STATUS SCREENS	
Screen Text	Description
SYSTEM STATUS	System status screens
MODE OFF	System mode. Options are: <ul style="list-style-type: none"> • MIN RUN • OFF • COOLING • HEATING • DEHUM • FORCED
COMP Z1 XXXXXXXX	Compressor operation status. Z equals the circuit and can be A, B, C, or D. The second line shows the status of the compressor on the circuit. <ul style="list-style-type: none"> • For a VFD compressor (YASK or DFOS), it shows the RPM the compressor is running at. It will show OFF if the compressor is not running. • If FIXED, it will show ON or OFF • If 2 STAGE, it will show LOW SPD or HIGH SPD • Can also show FAIL if RSM determines the compressor is off due to an alarm.
COND FAN XXX%	Condenser fan operation status. Options are: <ul style="list-style-type: none"> • 0-100% • NOT USED - Condenser fan not in use • OFF - Condenser is off
EXV ZX XXX%	Expansion valve operation status 0-100%

Table 7: System Status Screens

Sensor Status Screens

Refer to the following map when navigating through the Sensor Status Screens. From the SENSOR STATUS Screen, press <ENTER> to scroll through the screens.

SENSOR STATUS SCREENS	
Screen Text	Description
SENSOR STATUS	Sensor status screens
SUCTION XXX PSIG	Suction pressure reading from input. Measured in PSIG.
HEAD XXX PSIG	Head pressure reading from input. Measured in PSIG.
SUPRHT X XX.X°F	Current superheat calculation. The number of screens depends on the unit's configuration. Measured in degrees Fahrenheit.
COIL X XX.X°F	Coil temperature. Measured in degrees Fahrenheit.
SATURTN XXX.X°F	Calculated saturation coil temperature from suction pressure input. Measured in degrees Fahrenheit.
DLT X XXX.X°F	Discharge line temperature from TEMP1 input. Measured in degrees Fahrenheit.

Table 8: Sensor Status Screens

LCD SCREENS

Screen Descriptions

Alarms Screens

If an alarm is present, the ALARM LED above the LCD display lights up red and blinks. The Alarms display and scroll automatically from the ALARMS screen when alarms are present. The alarms are as follows:

ALARMS SCREENS			
Screen Text	Description	Screen Text	Description
ALARMS	Alarms Status screens	NO ALARMS	This is shown if there are no current alarms.
BIN 4 FAULT	If RSM is configured to use Binary Input 4 (BI4) as a fault indicator, this fault will show up if the input is open.	COIL X TEMPFAIL	This alarm will occur if the coil temperature is not within operable range (below -32°F or above 310°F). This could be the result of a bad sensor or faulty wiring. This alarm will shut down the system. The system will reset after five minutes if the sensor is detected.
COMP X FAULT	This alarm will occur if the compressor fails to run 45 seconds after the relay is activated or if the signal is lost after activation. This will cause an alarm and will shut down the compressor (relay). The system will retry after five minutes.	COMP VFD FAULT	This alarm will occur if the compressor's VFD communicates through E-BUS it has shut down due to a fault condition. The compressor module will attempt to reset the fault after five minutes if the compressor sends the signal that it is okay to reset the fault.
EXV NOT DETECTED	This will be shown if no communication exists between the RSM and installed EXV.	EBUS COM TIMEOUT	This alarm indicates that communication has been lost between the RSM-DEV1 and the AAON controller. This can be the result of a bad cable, a missing cable, or the module not being configured properly.
EMERGENCY SHUTDOWN	If Binary Input 4 (BI4) on the RSM is configured as an Emergency Shutdown input, the circuit will be disabled if the input is open.	ENVELOPE FAULT	If the compressor was running out of its operating envelope for too long, this fault will occur and the compressor will be turned off.
HIGH DIS LINETEMP	If discharge line temperature is above 260°F, the compressor will back off. If the temperature doesn't drop below 260°F after one minute, the compressor will turn off. Discharge line temperature needs to drop below 150°F for the compressor to come back after it has been off for at least five minutes. If this occurs three times in two hours, the compressor will be locked out until the module is reset.	HIGH HP DETECTED	This indicates a High Head Pressure Alarm condition which is activated when the Head Pressure rises above 550 psig. This will cause the condenser to go to 100%.
SUPRHEAT LOCKOUT	If the module fails on High Superheat twice in two hours, it will lock out the compressors.	LOW H2O TEMP	Low Leaving H ₂ O Temp
LOW SP DETECTED	This alarm will occur if suction pressure falls below the Low Suction Pressure Setpoint for 20 seconds. The system will try to protect by lowering compressor modulation percentage.	LOW SHX DETECTED	This alarm will be activated when the superheat is less than 4°F for two minutes during normal operation or four minutes during the first 10 minutes. The system will shut down and will retry after five minutes.
LOW SP FAILURE	This alarm will occur if suction pressure stays below the Low Suction Pressure Setpoint for one minute or falls below 40 psig for five seconds. This alarm will shut down the system. The system will retry after five minutes.	MODBUS TIMEOUT	Indicates there is no communication between the RSM-DEV1 and compressor VFD.
NO HEAD DETECTED	This alarm indicates the Head Pressure Transducer is not detected by the system. This will cause the condenser to go to 100%.	NO SUCT DETECTED	This alarm indicates the Suction Pressure Transducer is not detected by the system. The system will shut down due to unsafe suction safety and will retry after five minutes.
NO WATER FLOW	Proof of Water Flow	HI SHX FAILURE	If Superheat is above 30°F for ten minutes, it will turn off the compressors. It will retry after five minutes. If it fails twice in two hours, it will lock out the compressors.
HI SHX WARNING	If Superheat is above 25°F for two minutes, this alarm will appear on the module only. It will not be sent to the main controller to display on Prism 2.		

Table 9: Alarms Screens

LCD SCREENS

Screen Descriptions

Alarm History Screens

The ALARM HISTORY screen displays past alarms, if any, and how long ago the last of each type occurred. From the ALARM HISTORY Screen, press **<ENTER>** to scroll through the history screens.

The ALARM HISTORY screens follow the same sequence as the ALARMS screens but are abbreviated differently to allow space to show the time since last occurrence.

The first line is the ALARM NAME.

The second line shows how long ago each alarm last occurred. The screen displays:

- Minutes for the first 60 minutes of alarm occurrence.
- Hours for the next 72 hours of alarm occurrence.
- Days for the next 30 days of alarm occurrence.

Alarms clear after 30 days. Alarm history is not stored in memory. If power is lost, the alarms will clear.

ALARM HISTORY SCREENS			
Screen Text	Description	Screen Text	Description
NO ALARM HISTORY	No alarm history.	COMM T/O	E-BUS Slave Timeout
CL TMP X	Coil Temp Failure	SP SENSE	No Suction Pressure Sensor Detected
LOH2OTMP	Low Leaving Water Temp	UNSAFESP	Unsafe Suction Pressure Detected
COMP X FL	Compressor Not Running	NOH2OFLO	Proof of Water Flow
HPX SENSE	No Head Pressure Sensor Detected	HI SHX	High Superheat Failure
HIGH HP	High Head Pressure Detected	BIN4 ALM	BI4 is open, if configured.
LOW SP	Low Suction Pressure Detected	MODBUS	MODBUS Not Detected
LOW SHX	Low Superheat Detected	HDLT ALM	High Discharge Temperature Detected

Table 10: Alarm History Screens

Screen Descriptions

Setpoint Status Screens

Refer to the following map when navigating through the Setpoint Status Screens. From the SETPOINT STATUS Screen, press <ENTER> to scroll through the screens.

SETPOINT STATUS SCREENS	
Screen Text	Description
SETPOINT STATUS	Setpoint Status screens
HEADPRSP XXX PSIG	Head Pressure Setpoint. Valid range is 260-475 psig. Default is 340 psig. Measured in PSIG.
SUPRHT SP XX.X°F	Superheat Setpoint. Valid range is 1-30°F. Default is 15°F. Measured in degrees Fahrenheit.
LOW SUCT XX PSIG	Low Suction Pressure Setpoint. Default is 95 psig. Measured in PSIG.
COILT SP XX.X°F	Coil Temperature Setpoint. Valid range is 35-60°F. Default is 40°F. Measured in degrees Fahrenheit.

Table 11: Setpoint Status Screens

LCD SCREENS

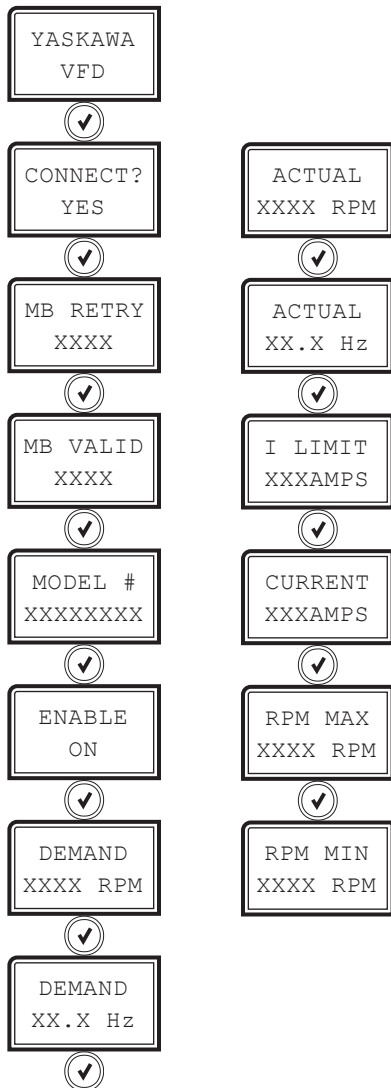
Screen Descriptions

VFD Menu Screens

The VFD Menu screen displayed depends on which compressor is installed on the unit. The options are Yaskawa VFD and Danfoss VFD.

Yaskawa VFD Screens

Refer to the following map and table when navigating through the Yaskawa VFD Screens. From the YASKAWA VFD screen, press **<ENTER>** to scroll through the screens.



YASKAWA VFD SCREENS	
Screen Text	Description
YASKAWA VFD	Yaskawa VFD status screens
CONNECT? YES	VFD is connected and communicating. Options are: <ul style="list-style-type: none"> • YES • NO
MB RETRY XXXX	Totals if it is missing communication packet information.
MB VALID XXXX	Totals if it receives good communication packet information.
MODEL # XXXXXXXX	VFD model number. Options are: <ul style="list-style-type: none"> • ZPV0212E • ZPV0282E • ZPV0342E • ZPV0382E • ZPV0412E • ZPV0662E • ZPV0962E • ERROR!!! If ERROR!!! is shown, check that proper unit is selected in Prism 2.
ENABLE ON	Options are: <ul style="list-style-type: none"> • ON • OFF-RDY • FAULT!! • FORCED! • NO RESP
DEMAND XXXX RPM	Demand on the compressor measured in RPM
DEMAND XXXX Hz	Demand on the compressor measured in Hz
ACTUAL XXXX RPM	Actual performance of the compressor measured in RPM
ACTUAL XXXX Hz	Actual performance of the compressor measured in Hz
I LIMIT XXXAMPS	I LIMIT Measured in amps
CURRENT XXXAMPS	CURRENT Measured in amps
RPM MAX XXXX RPM	RPM MAX Measured in RPM
RPM MIN XXXX RPM	RPM MIN Measured in RPM

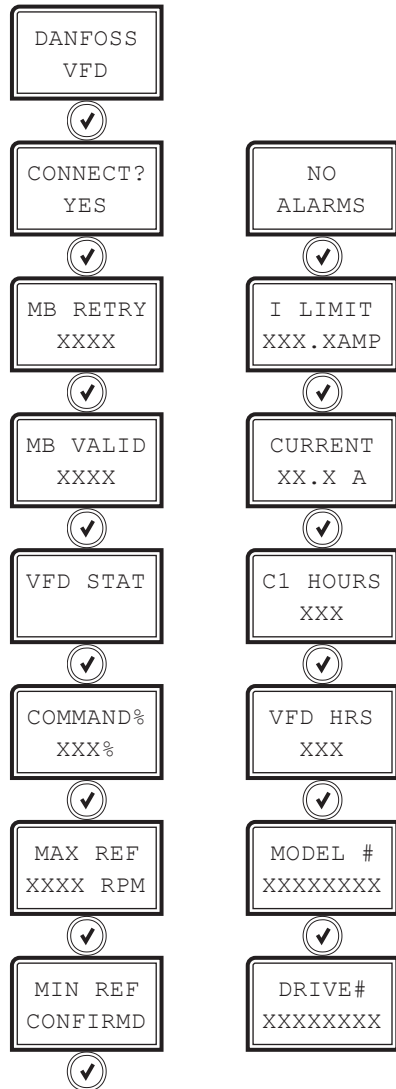
Table 12: Yaskawa VFD Screens

LCD SCREENS

Screen Descriptions

Danfoss VFD Screens

Refer to the following map and table when navigating through the Danfoss VFD screens. From the DANFOSS VFD screen, press <ENTER> to scroll through the screens.



DANFOSS VFD SCREENS	
Screen Text	Description
DANFOSS COMP	Danfoss VFD status screens
CONNECT? YES	VFD is connected and communicating. Options are: <ul style="list-style-type: none"> • YES • NO
MB RETRY XXXX	Totals if it is missing communication packet information.
MB VALID XXXX	Totals if it receives good communication packet information.
VFD STAT	VFD compressor status. Displays a value read from VFD showing status and configuration information. It will display each bit of information separately.
COMMAND% XXX%	Compressor percentage commanded to VFD.
MAX REF XXXX RPM	Maximum speed programmed into the VFD in RPM.
MIN REF CONFIRMD	Minimum speed programmed into the VFD. Options are <ul style="list-style-type: none"> • NOT = 0! • CONFIRMD For proper speed command this should always say CONFIRMD, meaning it is set to zero.
NO ALARMS	Alarm codes read from the VFD. Will show NO ALARMS if no alarms have occurred or the alarm code
I LIMIT XXX.XAMP	I LIMIT Measured in amps
CURRENT XX.X A	CURRENT Live current read from VFD in amps.
C1 HOURS 14	Compressor running hours read from VFD.
VFD HRS 28	VFD running hours read from VFD.
MODEL # XXXXXXXX	Compressor model number read from VFD. Options are: <ul style="list-style-type: none"> • VZH088 • VZH117 • VZH170 • VZH028 • VZH035 • VZH044 • VZH052 • VZH065 • UNKNOWN! If UNKNOWN is shown, check that proper unit is selected in Prism 2.
DRIVE# XXXXXXXX	Drive number. Options are: <ul style="list-style-type: none"> • CDS803 • CDS303.

Table 13: Danfoss VFD Screens

Screen Descriptions

EXV Type Screens

The EXV Type screen displayed depends on which compressor is installed on the unit. The options are DMQ and Sporlan.

DMQ Screens

Refer to the following map and table when navigating through the DMQ screens. From the EXV TYPE DMQ Screen, press **<ENTER>** to scroll through the screens.



DMQ EXV SCREENS	
Screen Text	Description
EXV TYPE DMQ	DMQ EXV status screens
EXV X DETECTED	EXV detected. The number of screens shown depends on unit configuration.
EXVX PSI XXX PSIG	EXV pressure measured in PSIG. The number of screens shown depends on unit configuration.

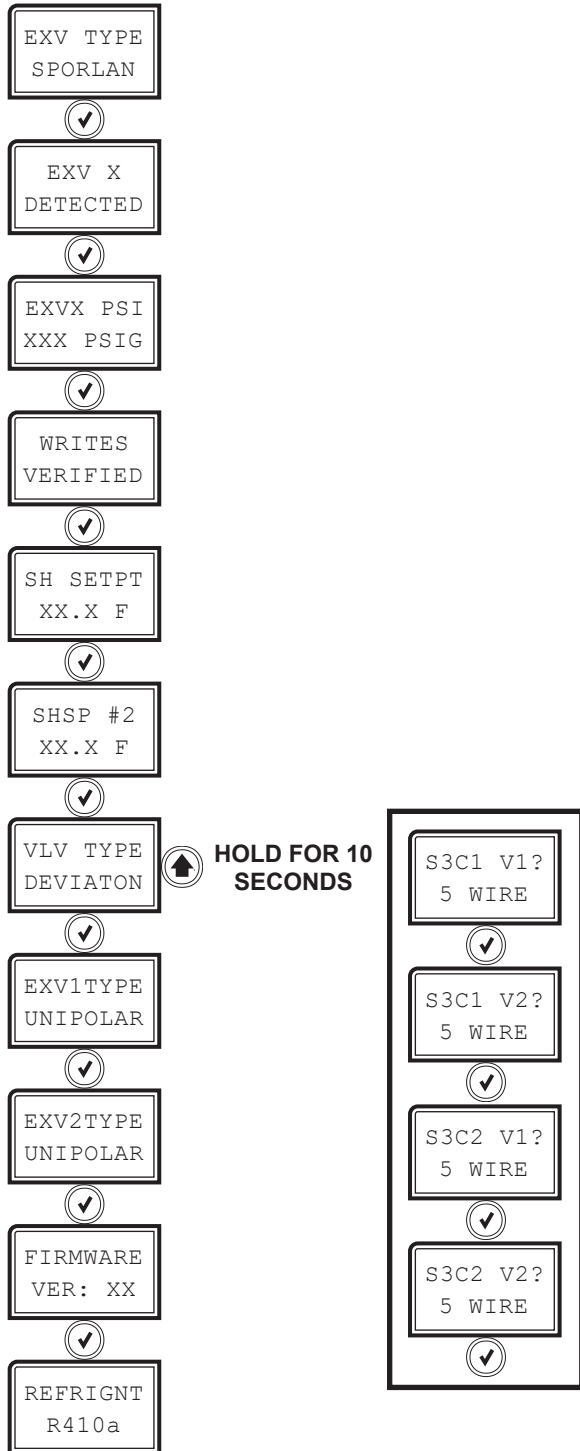
Table 14: DMQ EXV Screens

LCD SCREENS

Screen Descriptions

Sporlan Screens

Refer to the following map and table when navigating through the Sporlan screens. From the EXV TYPE SPORLAN Screen, press **<ENTER>** to scroll through the screens.



SPORLAN EXV SCREENS	
Screen Text	Description
EXV TYPE SPORLAN	Sporlan EXV status screens
EXV X DETECTED	EXV detected The number of screens shown depends on unit configuration.
EXVX PSI XXX PSIG	EXV PSI EXV pressure measured in PSIG. The number of screens shown depends on unit configuration.
WRITES VERIFIED	Options are: • ACTIVE • VERIFIED If writing to the EXV controller, it will show ACTIVE. If the write to the controller is verified as being received, it will show VERIFIED.
SH SETPT XX.X°F	Superheat setpoint for indoor coil. Measured in degrees Fahrenheit.
SHSP #2 XX.X°F	Superheat setpoint for outdoor coil. Measured in degrees Fahrenheit.
VLV TYPE DEVIATON	This screen will show that this is a factory deviation. Press and hold the UP button for 10 seconds to access the individual valve configuration screens. WARNING: Contact Controls Tech Support before making any changes to the configuration of this module.
S3C1 V1? S3C1 V2? S3C2 V1? S3C2 V2?	Hold the UP button for 10 seconds to access these screens. These screens show the selected valve and its configuration. Press the UP arrow to select 5 WIRE. Press the DOWN arrow to select 4 WIRE. Press ENTER to confirm selection. Refer to Appendix B for wiring illustrations for determining the correct valve connection. Allow 30 seconds for the module to communicate the updated settings with the valve controller.
EXV1TYPE UNIPOLAR	The type of EXV being used. Options are: • UNIPOLAR • BIPOLAR
EXV2TYPE UNIPOLAR	The type of EXV being used. Options are: • UNIPOLAR • BIPOLAR
FIRMWARE VER: XX	The software version of the Sporlan controller.
REFRIGNT R410a	The type of refrigerant being used. Options are: • R410a ERROR! will show up if there is a configuration issue.

Table 15: Sporlan EXV Screens

TROUBLESHOOTING

LED Diagnostics

Using RSM-DEV1 LEDs to Verify Operation

The RSM-DEV1 is equipped with LEDs that can be used to verify operation and perform troubleshooting. There are LEDs for communication, operation modes, and diagnostic codes. See **Figure 10, this page**, for the LED locations. The LEDs associated with these inputs and outputs allow you to see what is active without using a voltmeter. The LEDs and their uses are as follows:

Diagnostic LEDs

STATUS - If the software is running, this LED should blink at a rate of one blink per second.

ALARM (on board) - If the RSM-DEV1 Module does not receive communications for more than one minute, this LED lights up, the relays turn off, and the analog outputs go to 0 VDC.

ALARM (above LCD display) - This red LED lights up and stays lit when there is an alarm present. The type of alarm displays on the LCD display. The ALARM LED also blinks when the expansion valve is initializing at startup.

COMM - Every time the RSM-DEV1 Module receives a valid E-BUS request from the VCCX2 Controller, this LED blinks on and then off, signifying that it received a valid request and responded.

POWER - This LED lights up to indicate that 24 VAC power has been applied to the controller.

Binary Input LEDs

BIN1 - This green LED lights up when Compressor Status 1 input has 24VAC present.

BIN2 - This green LED lights up when Compressor Status 2 input has 24VAC present.

BIN3 - This green LED lights up when the Coil Temperature input has 24VAC present.

BIN4 - This green LED lights up when the Emergency Shutdown input has 24VAC present.

Relay LEDs

RLY1 - RLY4 - These green LEDs light up when the relays are enabled and stay lit as long as they are active.

RSM-DEV1 Stepper Motor Valve LED

EXV-1 - This yellow LED blinks to indicate communication to the Superheat Controller. If the LED is on solid, that indicates no communication to the Superheat Controller.

EXV-2 - This yellow LED blinks to indicate communication to the Superheat Controller. If the LED is on solid, that indicates no communication to the Superheat Controller.

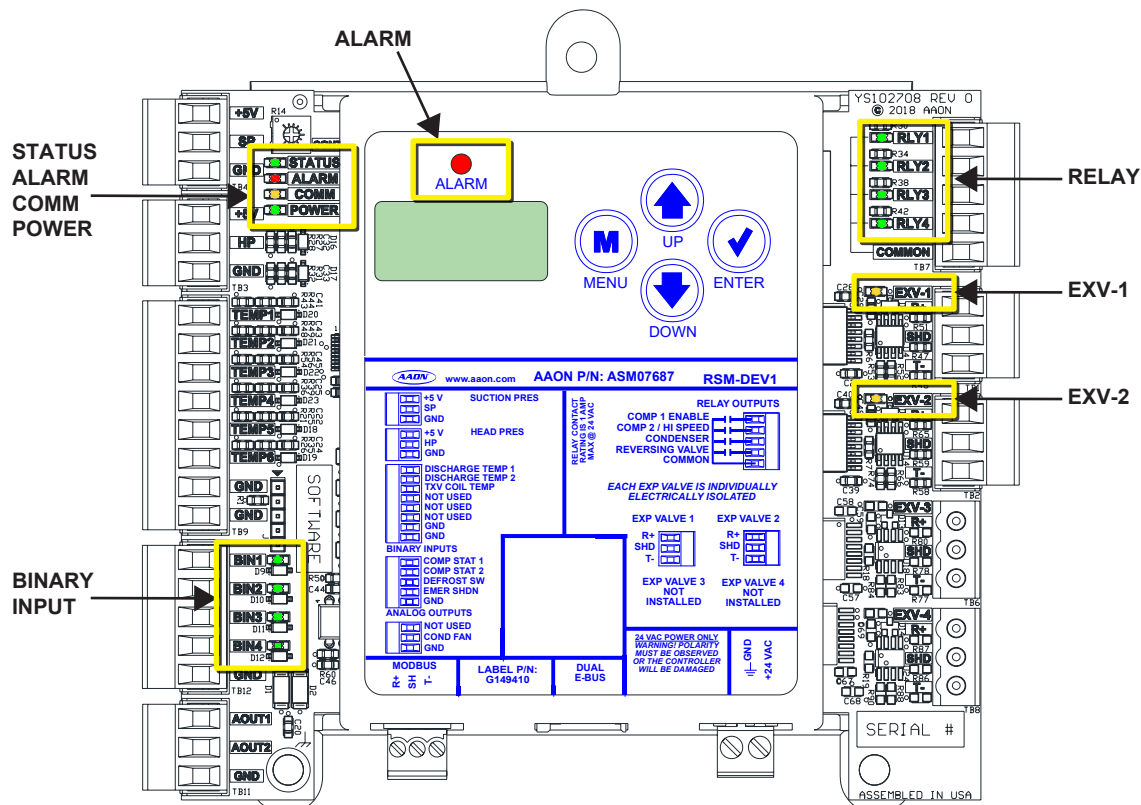


Figure 9: RSM-DEV1 LED Locations

TROUBLESHOOTING

Sensor Testing

TXV Coil Temperature Sensor Testing

The **Temperature, Resistance, and Voltage for Discharge Sensors, Table 16** below, is provided to aid in checking sensors that appear to be operating incorrectly. Many system operating problems can be traced to incorrect sensor wiring. Be sure all sensors are wired per the wiring diagrams in this manual.

If the sensors still do not appear to be operating or reading correctly, check voltage and/or resistance to confirm the sensor is operating correctly per the tables.

NOTE: Early releases of units do not have this sensor. If a software update is performed, an alarm will show up for missing sensor. This can be mitigated by contacting support.

Thermistor Sensor Testing Instructions

Use the Resistance (kOhms) column to check the thermistor sensor while disconnected from the controllers (not powered).

Use the Voltage @ Input (VDC) column to check sensors while connected to powered controllers. Read voltage with meter set on DC volts. Place the “-” (minus) lead on the GND terminal and the “+” (plus) lead on the sensor input terminal being investigated.

TEMPERATURE, RESISTANCE, AND VOLTAGE FOR DISCHARGE SENSORS

Temp (°F)	Temp (°C)	Resistance (kOhms)	Voltage @ Input (VDC)	Temp (°F)	Temp (°C)	Resistance (kOhms)	Voltage @ Input (VDC)
-40	-40	2889.60	4.98	167	75	12.73	2.80
-31	-35	2087.22	4.97	176	80	10.79	2.59
-22	-30	1522.20	4.96	185	85	9.20	2.39
-13	-25	1121.44	4.95	194	90	7.87	2.19
-4	-20	834.72	4.94	203	95	6.77	2.01
5	-15	627.28	4.92	212	100	5.85	1.84
14	-10	475.74	4.89	221	105	5.09	1.68
23	-5	363.99	4.86	230	110	4.45	1.53
32	0	280.82	4.82	239	115	3.87	1.39
41	5	218.41	4.77	248	120	3.35	1.25
50	10	171.17	4.72	257	125	2.92	1.12
59	15	135.14	4.65	266	130	2.58	1.02
68	20	107.44	4.57	275	135	2.28	0.92
77	25	86.00	4.47	284	140	2.02	0.83
86	30	69.28	4.36	293	145	1.80	0.76
95	35	56.16	4.24	302	150	1.59	0.68
104	40	45.81	4.10	311	155	1.39	0.61
113	45	37.58	3.94	320	160	1.25	0.55
122	50	30.99	3.77	329	165	1.12	0.50
131	55	25.68	3.59	338	170	1.01	0.45
140	60	21.40	3.40	347	175	0.92	0.42
149	65	17.91	3.20	356	180	0.83	0.38
158	70	15.07	3.00				

NOTE: If the voltage is above 4.98 VDC, then the sensor or wiring is “open.” If the voltage is less than 0.38 VDC, then the sensor or wiring is shorted.

Table 16: Temperature, Resistance, and Voltage for Discharge Sensors

TROUBLESHOOTING

Sensor Testing

Discharge Line Thermistor Temperature Sensor Testing

Table 17, this page, is provided to aid in checking sensors that appear to be operating incorrectly. Many system operating problems can be traced to incorrect sensor wiring. Be sure all sensors are wired per the wiring diagrams in this manual.

If the sensors still do not appear to be operating or reading correctly, check voltage and/or resistance to confirm that the sensor is operating correctly per the table.

Thermistor Sensor Testing Instructions

Use the resistance column to check the thermistor sensor while disconnected from the controllers (not powered).

Use the voltage column to check sensors while connected to powered controllers. Read voltage with meter set on DC volts. Place the “-” (minus) lead on GND terminal and the “+” (plus) lead on the sensor input terminal being investigated.

DISCHARGE LINE THERMISTOR SENSOR TEMPERATURE AND RESISTANCE

Temp (°F)	Temp (°C)	Resistance (kOhms)	Voltage @ Input (VDC)	Temp (°F)	Temp (°C)	Resistance (kOhms)	Voltage @ Input (VDC)
-40	-40	2889.60	4.98	167	75	12.73	2.80
-31	-35	2087.22	4.97	176	80	10.79	2.59
-22	-30	1522.20	4.96	185	85	9.20	2.39
-13	-25	1121.44	4.95	194	90	7.87	2.19
-4	-20	834.72	4.94	203	95	6.77	2.01
5	-15	627.28	4.92	212	100	5.85	1.84
14	-10	475.74	4.89	221	105	5.09	1.68
23	-5	363.99	4.86	230	110	4.45	1.53
32	0	280.82	4.82	239	115	3.87	1.39
41	5	218.41	4.77	248	120	3.35	1.25
50	10	171.17	4.72	257	125	2.92	1.12
59	15	135.14	4.65	266	130	2.58	1.02
68	20	107.44	4.57	275	135	2.28	0.92
77	25	86.00	4.47	284	140	2.02	0.83
86	30	69.28	4.36	293	145	1.80	0.76
95	35	56.16	4.24	302	150	1.59	0.68
104	40	45.81	4.10	311	155	1.39	0.61
113	45	37.58	3.94	320	160	1.25	0.55
122	50	30.99	3.77	329	165	1.12	0.50
131	55	25.68	3.59	338	170	1.01	0.45
140	60	21.40	3.40	347	175	0.92	0.42
149	65	17.91	3.20	356	180	0.83	0.38
158	70	15.07	3.00				

If the voltage is above 4.98 VDC, then the sensor or wiring is “open.” If the voltage is less than 0.38 VDC, then the sensor or wiring is shorted.

Table 17: Discharge Thermistor Temperature and Resistance

TROUBLESHOOTING

Transducer Testing

Suction Pressure Transducer Testing for R410-A Refrigerant

The evaporator coil temperature is calculated by converting the suction pressure to temperature. The suction pressure is obtained by using the Suction Pressure Transducer, which is connected to the suction line of the compressor.

Use the voltage column to check the Suction Pressure Transducer while connected to the RSM-DEV1 Module. The VCCX2 and the RSM-DEV1 Module must be powered for this test. Read voltage with a meter set on DC volts. Place the positive lead from the meter on the SP1 terminal located on the RSM-DEV1 Module terminal block. Place the negative lead from the meter on the ground (GND) terminal located adjacent to the SP1 terminal on the RSM-DEV1 Module terminal block. Use a refrigerant gauge set and/or an accurate electronic thermometer to measure the temperature or suction line pressure near where the Suction Pressure Transducer is connected to the suction line. Measure the voltage at the SP1 and GND terminals and compare it to the appropriate chart depending on the refrigerant in use. If the temperature/voltage or pressure/voltage readings do not align closely with the chart, the Suction Pressure Transducer is probably defective and needs to be replaced.

See **Table 18, this page**. The chart shows a temperature range from 21.19°F to 80.18°F. For troubleshooting purposes, the DC voltage readings are also listed with their corresponding temperatures and pressures.

SUCTION PRESSURE TRANSDUCER CHART FOR R410-A REFRIGERANT

Temperature (°F)	Temperature (°C)	Pressure (psi)	Signal DC Volts
21.19	-6.1	80.94	1.8
24.49	-4.4	87.16	1.9
27.80	-2.8	93.39	2.0
30.99	-1.1	99.62	2.1
33.89	0.6	105.84	2.2
36.80	2.2	112.07	2.3
39.71	3.9	118.29	2.4
42.30	5.6	124.52	2.5
44.85	6.7	130.75	2.6
47.39	8.3	136.97	2.7
49.94	9.4	143.20	2.8
52.23	11.1	149.42	2.9
54.50	12.2	155.65	3.0
56.76	13.3	161.88	3.1
59.03	15.0	168.10	3.2
61.17	16.1	174.32	3.3
63.19	17.2	180.55	3.4
65.21	18.3	186.78	3.5
67.23	19.4	193.00	3.6
69.24	20.6	199.23	3.7
71.15	21.7	205.46	3.8
72.95	22.2	211.68	3.9
74.76	23.3	217.91	4.0
76.57	24.4	224.14	4.1
78.37	25.6	230.36	4.2
80.18	26.7	236.59	4.3

Table 18: Suction Pressure Transducer Chart for R410-A Refrigerant

TROUBLESHOOTING

Transducer Testing

If you suspect there is a problem related to the head pressure transducer, measurements can be taken at the HP terminal. See **Table 19, this page.**

HEAD PRESSURE TRANSDUCER CHART			
Voltage	Pressure	Voltage	Pressure
0.5	0	2.6	350
0.6	17	2.7	367
0.7	33	2.8	384
0.8	50	2.9	400
0.9	67	3.0	417
1.0	83	3.1	434
1.1	100	3.2	450
1.2	117	3.3	467
1.3	133	3.4	484
1.4	150	3.5	500
1.5	167	3.6	517
1.6	183	3.7	534
1.7	200	3.8	550
1.8	217	3.9	567
1.9	233	4.0	584
2.0	250	4.1	600
2.1	267	4.2	617
2.2	283	4.3	634
2.3	300	4.4	650
2.4	317	4.5	667
2.5	334		

Table 19: Head Pressure Transducer Chart

Yaskawa V1000 Configuration

In order for the module to communicate with the Yaskawa V1000, it needs to be configured to the following settings. For more information, refer to the Yaskawa *V1000 Technical Manual*.

b1-01 = 2: MEMOBUS communications

b1-02 = 2: MEMOBUS communications

H5-01 Drive Slave Address
Default = 31 (1F)

H5-02 Comm Speed
Default = 3: 9600

H5-03 Comm Parity
Default = 0: No Parity

H5-04 Stop Method after comm error
Default = 1: Coast to stop

H5-05 Comm Fault Detection
Default = 1 Enabled to fault on comm loss

H5-06 Drive transmit wait time
Default = 5 ms

H5-07 RTS Control Selection
Default = 1: Enabled – RTS Switches while sending

H5-09 CE Detection Time
NOT Default: Set to 10.0 seconds

APPENDIX B: S3C VALVE

S3C Valve Wiring Information

The number of wires mentioned in the S3C# V# screens are referring to the number of wires connected to the S3C Valve Module in the highlighted areas.

For example, if this is the first module connected and there are 4 wires connected to Stepper Valve 1 and 5 wires connected to Stepper Valve 2 the screens should be configured as follows:

S3C1 V1? 4 WIRE

S3C1 V2? 5 WIRE

NOTE: When on the individual configuration screens, pushing UP will select 5 WIRE and pushing DOWN will select 4 WIRE. Use ENTER to confirm your selection.

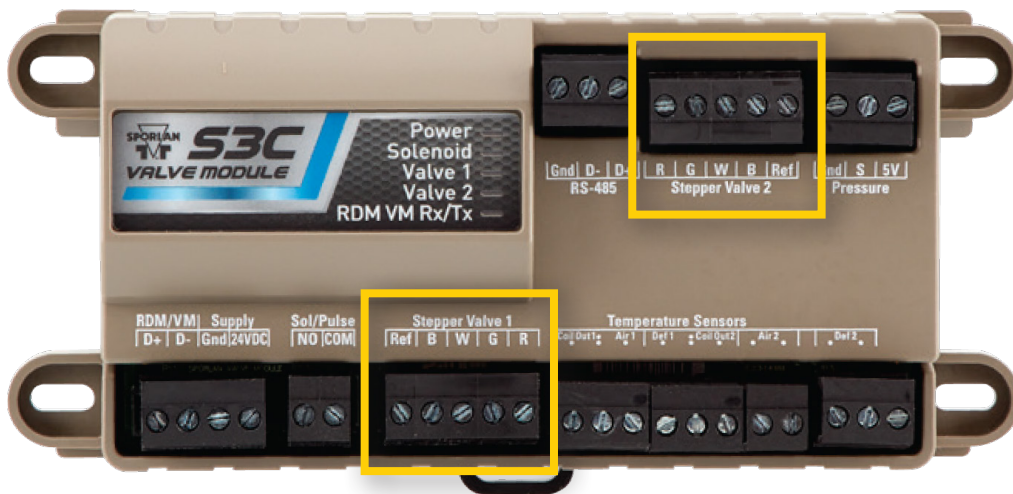


Figure 10: S3C Valve Module Stepper Valve Locations

RSM-DEV1 Technical Guide

Rev. A · 231215

AAON Controls Tech Support:

866-918-1100 | 918-382-6450 | controls.support@aaon.com
Monday through Friday, 7:00 AM to 5:00 PM Central Time

Controls Tech Support website:

www.aaon.com/aaon-controls-technical-support

AAON Factory Technical Support:

918-382-6450 | techsupport@aaon.com

NOTE: Before calling Technical Support, please have the model and serial number of the unit available.

PARTS: For replacement parts, please contact your local AAON Representative.



2425 South Yukon Ave • Tulsa, OK • 74107-2728
Ph: (918) 583-2266 • Fax: (918) 583-6094

Rev. A

Created in the USA • Copyright December 2023 • All Rights Reserved
