



# SYSTEM MANAGER TS-L ASM01900



Stay in control with customizable control solutions. AAON offers a wide range of control solutions to optimally regulate and monitor the operation of your HVAC systems.

## PHYSICAL

### Directly Interact with AAON Controllers

The System Manager TS-L (Limited Access) – (SMTS-L) is an end-user system interface that provides a graphic-enhanced, menu-driven, link to allow the system operator to change space, setpoints, and schedules and to view certain status points and alarms of the following Orion system controllers:

- VCCX2 Controller
- VCCX-454 Controller
- VCCX-IP Controller
- VCC-X Controller
- VCB-X Controller
- VCM-X E-BUS Series Controller
- VAV/Zone Controller
- MiniLink PD

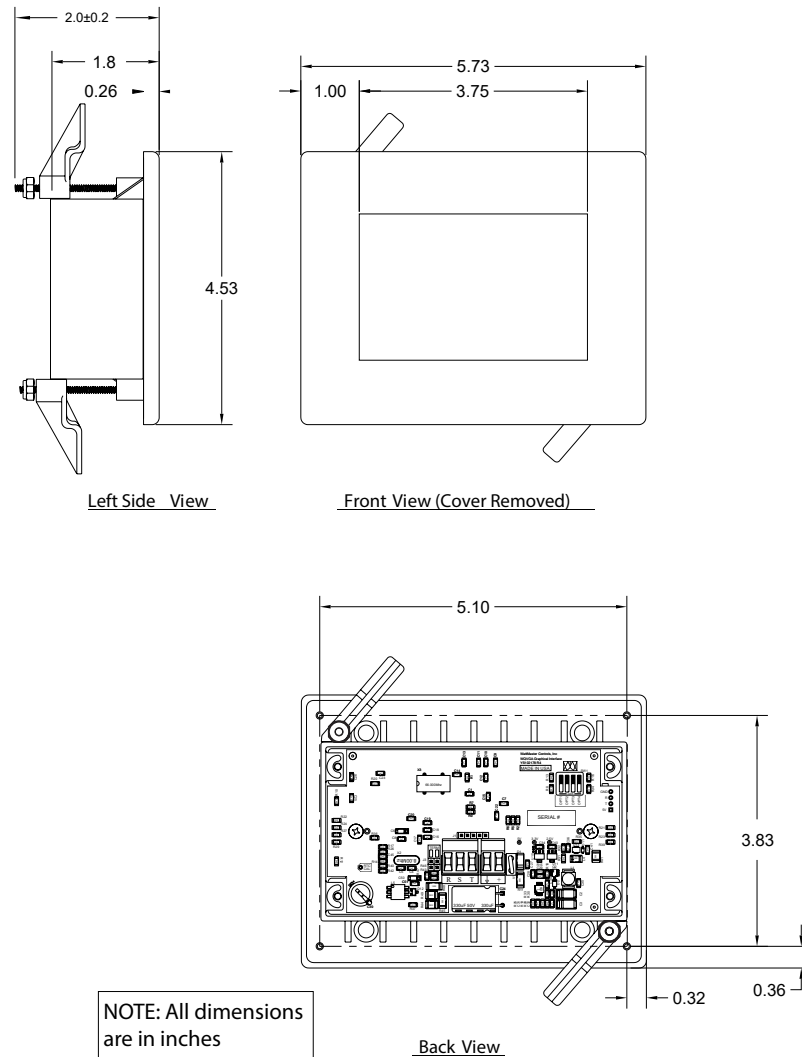
The SMTS-L is equipped with a 4.3" 480 x 272 WQVGA RGB TFT LCD Touch Screen Display.

The SMTS-L utilizes a graphical touch screen menu system with easy-to-understand menu options that provide the user with easy setup and operation without the need for specialized training. Protection from unauthorized users is provided by the SMTS-L's integral pass code authorization.

### Electrical and Environmental

Display	4.3" 480x272 WQVGA RGB TFT LCD Touch Screen Display
Power Supply	24 VAC Single 60 Hz
Power Consumption	6 VA Maximum
Operating Temperature	14°F to 158°F
Operating Humidity	0-95% RH Non-Condensing
Communication Connection	RS-485
Protocol	HSI Open Protocol Token Passing
Housing Material	Plastic
Communications	Isolated RS-485
User Interface Method	LCD Touch Screen

**Contact AAON Support for Technical Assistance**  
[www.aaon.com/contact](http://www.aaon.com/contact)



## INSTALLATION

### Mounting

The SMTS-L is housed in a plastic enclosure designed for mounting in hollow drywall construction with the flush mount version (shown) or on a concrete, brick or other solid wall surface with the surface mount version (optional).

The flush mount version has integrated wing nut paddles that are tightened after installation to grip the drywall and hold the SMTS-L in place. The surface mount version is designed to be installed to a double duplex outlet box (by others).

Both mounting styles of the SMTS-L feature an integral magnetically-secured face plate which

can be easily removed for reset of the display when required. The SMTS-L should be mounted at approximately eye level to allow for ease of programming and reading of the display. The SMTS-L is typically mounted in the building manager's or superintendent's office or in an equipment room.

The SMTS-L is connected to the local communications loop of the Orion system via 18 AWG 2-conductor, twisted pair wire with shield wire connected to the T, SHLD & R communications terminals on the back of the SMTS-L.

Scan the code for additional product information

